

# VELOCITY BLOWERS®



## TORNADO SERIES®

### Positive Displacement Blowers & Vacuum Pumps



- Drop in replacement for Roots URAI®, Sutorbilt Legend®, and Competitor Plus Series®
- Bi-Lobe Rotor Design
- Oversized premium bearings
- Larger oil sump for gears
- Ground alloy shaft
- Ductile iron balanced rotor
- Keyless locking gear assembly
- Adjustable mounting feet
- Quieter operation at any speed
- Oil Level Sight Glass
- Aluminum Gear Cover
- Every Blower Tested
- Longest Warranty Available

**Built in Texas with a full three year warranty**

#### TYPICAL APPLICATIONS

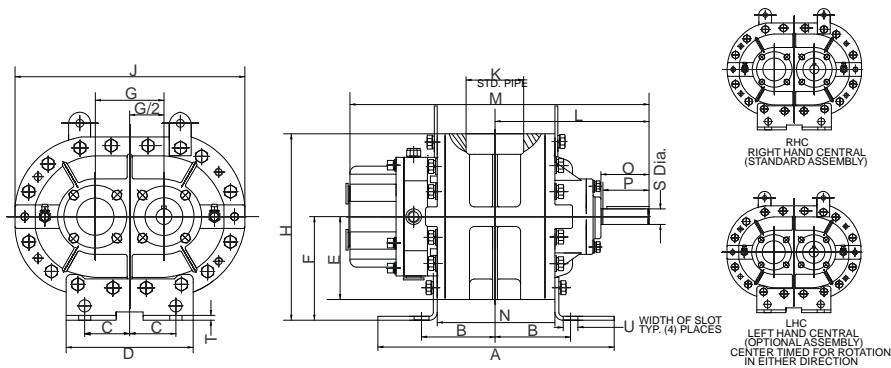
- Pneumatic Conveying
- Waste Water Aeration
- CNC Hold Down
- Central Vacuum
- Dairy Milking
- Carpet Cleaning
- Fluidization
- Pothole Patching
- Vacuum Processing
- Oilfield Vacuum & Extraction





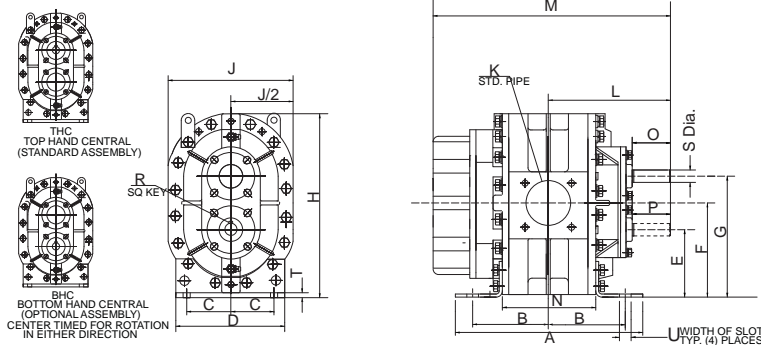
## Horizontal Configuration (Vertical Flow)

	Wt.	CONN.	A	B	C	D	E	F	G	H	J	K	L	M	N	O	P	R	S	T	U
<b>22M</b>	48	S	7.52	2.01	2	6.69	3.33	3.74	2.756	7.07	9.25	1	5.20	10.08	2.76	1.93	1.83	3/16	0.625	0.16	0.43x0.59
<b>24L</b>	60	S	9.49	2.99	2	6.69	3.33	3.75	2.756	7.08	9.25	2	6.18	12.05	4.72	1.93	1.83	3/16	0.625	0.16	0.43x0.59
<b>33M</b>	88	S	10.91	3.25	2.87	7.87	3.96	5.00	3.543	8.96	11.30	2	6.24	12.81	4.45	1.95	1.88	3/16	0.75	0.24	0.55x1.10
<b>36L</b>	111	S	13.58	4.59	2.87	7.87	3.96	5.00	3.543	8.96	11.30	2.5	7.58	15.49	7.13	1.95	1.88	3/16	0.75	0.24	0.55x1.10
<b>45M</b>	132	S	10.83	4.15	3.0	7.99	4.27	6.26	4.035	10.53	12.42	2.5	7.99	16.02	6.34	2.36	2.25	3/16	0.875	0.24	0.55x1.02
<b>47L</b>	162	S	13.39	5.43	3.0	7.99	4.27	6.26	4.035	10.53	12.42	3	9.27	18.58	8.90	2.36	2.25	3/16	0.875	0.24	0.55x1.02
<b>53H</b>	210	S	8.50	3.50	3.5	8.66	5.20	6.97	5.079	12.19	15.47	2.5	8.19	17.19	4.88	2.50	2.40	1/4	1.125	0.88	0.55x1.10
<b>56M</b>	217	S	12.48	4.55	3.5	8.66	5.20	6.97	5.079	12.17	15.47	4	9.19	18.76	6.89	2.50	2.40	1/4	1.125	0.24	0.55x1.10
<b>59L</b>	285	S	16.54	6.57	3.5	8.66	5.20	6.97	5.079	12.17	15.47	4	11.22	22.81	10.94	2.50	2.40	1/4	1.125	0.24	0.55x1.10
<b>68M</b>	364	S	19.96	5.79	7	15.75	6.20	8.74	5.98	14.94	17.99	5	10.81	22.40	9.06	2.93	2.76	5/16	1.375	0.39	0.79x1.34
<b>615L</b>	529	F	26.93	9.27	7	15.75	7.50	8.74	5.98	16.24	17.99	6	14.31	29.37	16.02	2.93	2.76	5/16	1.375	0.39	0.79x1.34
<b>711M</b>	661	F	25.08	7.70	9	20.08	8.50	11	7.09	19.50	22.09	6	12.83	26.81	11.69	3.27	3.15	3/8	1.562	0.39	0.79x1.65
<b>718L</b>	849	F	31.89	11.10	9	20.08	8.50	11	7.09	19.50	22.09	8	16.24	33.62	18.50	3.27	3.15	3/8	1.562	0.39	0.79x1.65



Wt.	CONN.	A	B	C	D	E	F	G	H	J	K	L	M	N	O	P	R	S	T	U	
48	S	6.18	2.01	1.5	6.69	3.50	4.88	6.26	9.51	6.65	1	5.20	10.8	2.76	1.93	1.83	3/16	0.625	0.14	0.43x0.59	<b>22M</b>
60	S	8.15	2.99	1.5	6.69	3.50	4.88	6.26	9.51	6.65	2	6.18	12.05	4.72	1.93	1.83	3/16	0.625	9.51	0.43x0.59	<b>24L</b>
88	S	9.33	3.25	2.5	7.87	4.49	6.26	8.03	11.91	7.91	2	6.24	12.81	4.45	1.93	1.83	3/16	0.75	0.14	0.43x0.59	<b>33M</b>
111	S	12.01	4.59	2.5	7.87	4.49	6.26	8.03	11.91	7.91	2.5	7.58	15.49	7.13	1.95	1.88	3/16	0.75	0.24	0.55x1.10	<b>36L</b>
132	S	12.64	4.15	3	7.99	4.48	6.50	8.51	12.71	8.54	2.5	7.99	16.02	6.34	1.95	1.88	3/16	0.875	0.24	0.55x1.10	<b>45M</b>
162	S	15.20	5.43	3	7.99	4.48	6.50	8.51	12.71	8.54	3	9.27	18.58	8.90	2.36	2.25	3/16	0.875	0.24	0.55x1.02	<b>47L</b>
210	S	8.60	3.50	3.5	8.66	5.5	8.01	10.25	15.70	10.38	2.5	8.19	17.19	4.88	2.5	2.13	1/4	1.125	0.375	0.55x1.10	<b>53H</b>
217	S	12.48	4.55	3.5	8.66	5.47	8.01	10.55	15.75	10.39	4	9.19	18.76	6.89	2.36	2.25	3/16	0.875	0.24	0.55x1.02	<b>56M</b>
285	S	16.54	6.57	3.5	8.66	5.47	8.01	10.55	15.75	10.39	4	11.22	22.81	10.94	2.5	2.4	1/4	1.125	0.24	0.55x1.10	<b>59L</b>
364	S	17.24	5.79	4	15.75	8.76	11.75	14.74	20.75	12.4	5	10.81	22.40	9.06	2.5	2.4	1/4	1.375	0.24	0.55x1.10	<b>68M</b>
529	S	24.21	9.27	4	15.75	8.76	11.75	14.74	20.75	15	6	14.31	29.37	16.02	2.93	2.76	5/16	1.375	0.39	0.79x1.34	<b>615L</b>
661	F	21.93	7.70	5.5	20.08	10.96	14.50	18.04	25.54	17	6	12.83	26.81	11.69	3.27	3.15	3/8	1.562	0.39	0.79x1.34	<b>711M</b>
849	F	28.74	11.10	5.5	20.08	10.96	14.50	18.04	25.54	17	8	16.24	33.62	18.50	3.27	3.15	3/8	1.562	0.39	0.79x1.65	<b>718L</b>

## Vertical Configuration (Horizontal Flow)



## CAPACITY CHART

MODEL	Max. Press. PSI	Max. Vac. (in. Hg)	Maximum RPM	Displacement CFR
22M	12	16	5275	0.02
24L	7	15	5275	0.039
33M	12	15	3600	0.60
36L	7	15	3600	0.103
45M	12	16	3600	0.118
47L	7	15	3600	0.169
53H	15	16	2850	0.140
56M	13	16	2850	0.215
59L	7	15	2850	0.337
68M	14	16	2350	0.380
615L	7	14	2350	0.730
711M	10	16	2050	0.740
718L	6	12	2050	1.209

S=Threaded connections standard NPT. F=Flange connections.  
 Inlet and outlet connections are the same type and size.  
 Dimensions are in inches. Weights are in pounds.



**BLOWER PACKAGING**



**CONVEY TUBING  
& COUPLINGS**



**EPACT RATED DRIVE MOTORS  
AND VFD CONTROLS**



**SPRING LOADED AND  
WEIGHTED RELIEF VALVES**



**BLOWER NOISE SILENCERS**



**INLET FILTER ASSEMBLIES**



**BLOWER INLET FILTERS**



**PRESSURE &  
VACUUM GAUGES**



**CHECK VALVES**



**V-BELTS & PULLEYS**



**QUARTS  
1 & 5 GALLONS  
55 GALLON DRUMS**  
**SYNTHETIC LUBRICANTS**



**SHOP & FIELD REPAIRS**