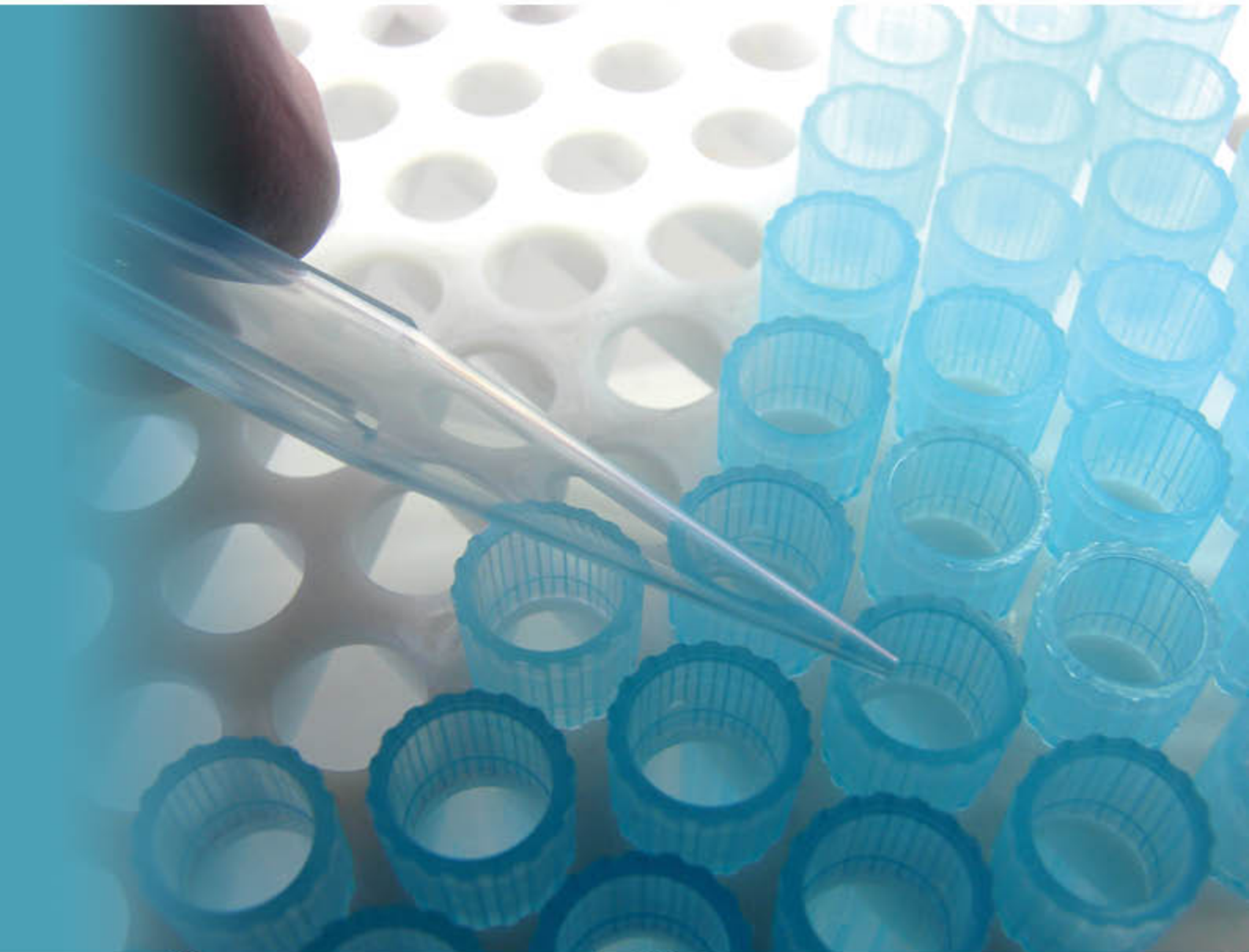


D DEFINITIVE USA



D

D DEFINITIVE USA

DEFINITIVE is the conception of a group of professionals with decades of world wide experience in the fields of dosing, mixing, conveying, and industrial automation. Our size and scope of technical capabilities make us the ideal partner to resolve your most challenging production applications.

DEFINITIVE designs high quality, efficient solutions for a wide range of industries from food or chemical to cement and plastics or any process reliant on dosing, storage, transport and mixing.

DEFINITIVE's vast experience and attention to detail makes us the perfect partner for a single feeder or a complete plant automation.

DEFINITIVE's first priority is customer satisfaction. Our success is based on your success with our products and service.



Definitive world wide



D DEFINITIVE INNOVATION

Via Raimondo della Costa
41122 Modena
Web www.definn.eu
E-mail info@definn.eu

D DEFINITIVE INTERNATIONAL

Viale dell'Industria, 42
21052 Busto Arsizio (VA)
Phone +39 0331 67 77 16
Fax +30 0331 32 65 81
Web www.syncro-group-it
E-mail info@syncro-group-it

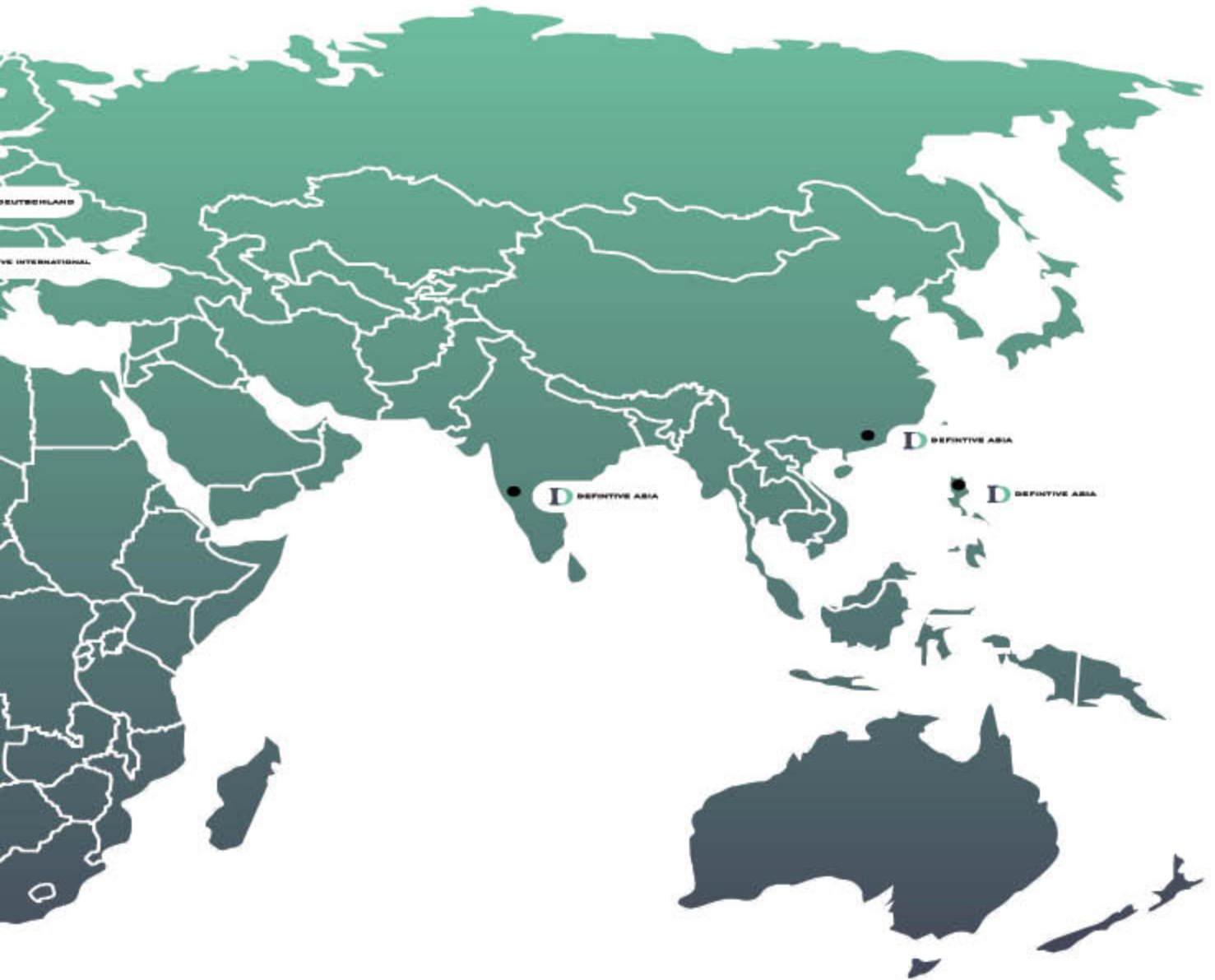
D DEFINITIVE USA

2701 Deborah Avenue
Zion, IL 60099
Phone +1 888-778-9804
Fax +1 847-556-6099
Web www.syncrousa.net
E-mail sales@syncrousa.net

INEAL SYNCRO
Avenida Sapopemba, 616
09250-301 Jd. das Maravilhas
Santo André - SP Brasil
Phone +55 11 49774700
Web www.inealsyncro.com.br
E-mail info@inealsyncro.com.br

D DEFINITIVE DEUTSCHLAND

Eigenheimstrasse 13
D-90552 Roethenbach a.d. Pegnitz
Phone +49 (0)911-508077
Fax +49 (0)911-5009747
Web www.syncro-deutschland.com
E-mail info@syncro-deutschland.com



 **D** DEFINTIVE ASIA

LTD China
Dalang, Dongguan,
Guangdong - Cina
Phone +86 769 8267 7669
Fax +86 769 8267 7663
E-mail donggan@shini-syncro.com

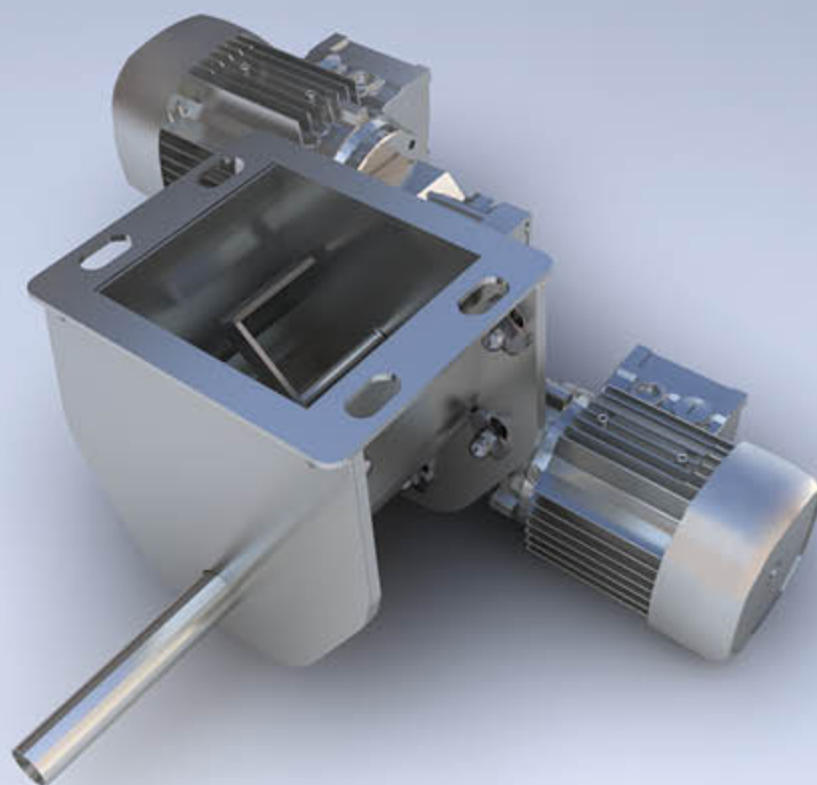
 **D** DEFINTIVE ASIA

LTD India
Village: Waliv Tal. Vassai,
Dist: Thane, India
Phone +91 96 2345 2250
Fax +91 96 2345 2257
Web www.syncrousa.net
E-mail india@shini-syncro.com

 **D** DEFINTIVE ASIA

LTD Taiwan
Minhe Street, Shulim City
Taipei, Taiwan
Phone +886 2 2680 9119
Fax +886 2 2680 9229
E-mail taipei@shini-syncro.com





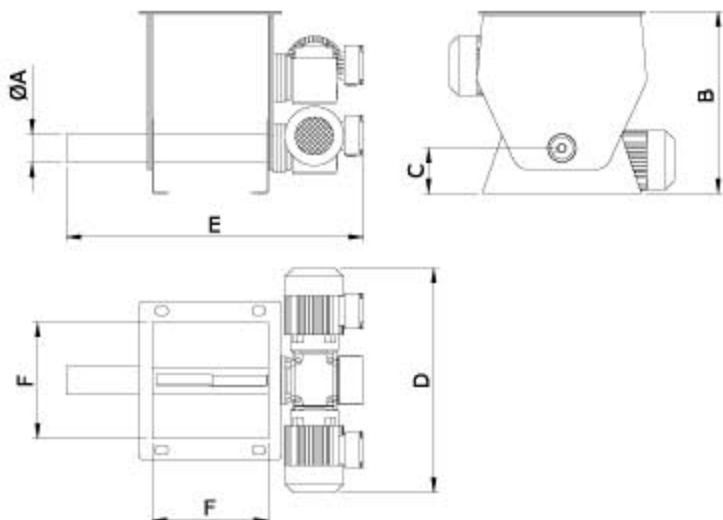
F SERIES SCREW FEEDERS

The F Series single screw feeders are designed for feeding powders, granules and synthetic fibres.

Available both in volumetric and loss-in-weight releases with electronic load cell system, they ensure precision and reliability. They are used in different configurations in all industrial sectors, from cement to chemicals and in the special releases made entirely of stainless steel AISI 316L in the food and pharmaceutical industries.

The different configurations available made them suitable for processing materials with very different grain size, fluidity and density. Available also in ATEX release.

The hourly operating feed rates, depending on the feeder size, go from 0.1 kg to 13.00 t/h.



DIMENSIONS

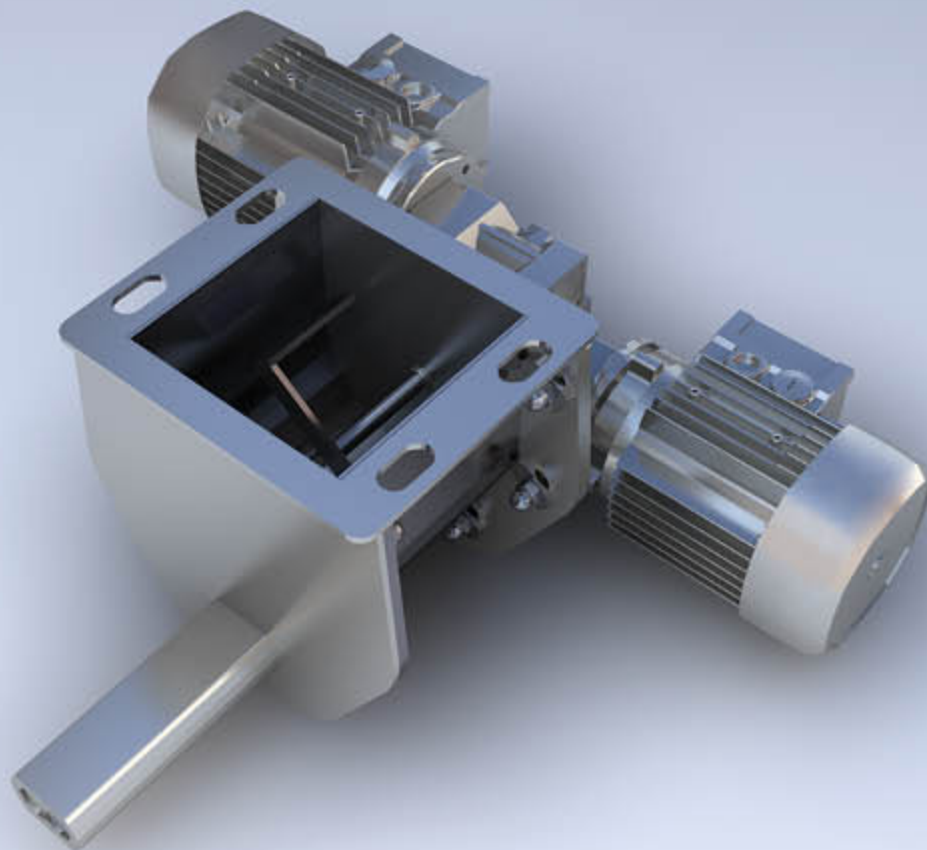
MODEL	A	B	C	D	E	F
FSV020D	27	300	100	450	550	140
FSV030D	38	300	100	450	550	140
FRV030D	38	320	50	500	650	220
FRV040D	45	320	50	500	650	220
FMV060D	70	420	80	600	850	285
FMV080D	89	420	80	600	850	285
FLV100D	129	500	90	750	950	320
FLV120D	154	500	90	750	950	320

CAPACITY

MODEL	dm ³ /h										
	1	7,5	15	25	125	250	800	1600	3200	6500	13000
FSV020D	1	7,5	15								
FSV030D		7,5	15	25							
FRV030D			15	25	125						
FRV040D				25	125	250					
FMV060D					125	250	800				
FMV080D						250	800	1600			
FLV100D							800	1600	3200	6500	
FLV120D								1600	3200	6500	13000

TECHNICAL CHARACTERISTICS

	STANDARD SUPPLY	UPON REQUEST
Contact parts	AISI 304	AISI 316L
Exterior finish	Satin finish 180 mesh	Polishing Ra4
Interior finish	2B	Polishing Ra4
Gaskets	NBR	Food-NBR (FDA)
Seals	PUR wear resistant	Food-PUR (FDA)
Connections	Fast-unlock (captive screws)	Knobs
Optionals	See specific document	



D SERIES TWIN SCREW FEEDERS

When, in addition to precision, a high consistency of feeding is required, it is necessary to use a twin screw system. The D Series feeders, equipped with twin extraction screw, ensure a homogenous material flow due to the particular machine process, that ensure a perfect coupling.

The D Series twin screw feeders are designed for feeding materials in powder and synthetic fibres. Available both in volumetric and loss-in-weight release with an electronic load cell system, they ensure precision and reliability.

They are used in different configurations in all industrial sectors, from cement to chemicals and in the special releases made entirely of stainless steel AISI 304 in the food and pharmaceutical industries. Especially recommended for very fine powders. Also available in food release and ATEX release.

The hourly operating feed rates, depending on the feeder size, go from 0.01 kg to 7.00 t/h. The different configurations available made them suitable for the processing of materials with very different grain size, fluidity and density. Available also in ATEX release.

DIMENSIONS

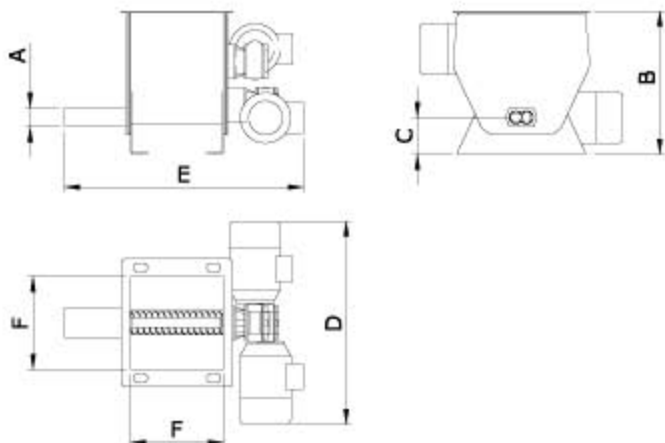
MODEL	A	B	C	D	E	F
DSV020D	35*55	300	125	450	560	140
DRV030D	45*70	350	90	500	650	220
DMV040D	50*85	420	85	600	820	285
DLV060D	75*130	500	90	750	1100	320

CAPACITY

MODEL	dm ³ /h								
	1	10	15	50	150	200	500	1000	2000
DSV020D	Yellow	Yellow	Yellow						
DRV030D		Green	Green	Green					
DMV040D					Blue	Blue	Blue		
DLV060D						Red	Red	Red	Red

TECHNICAL CHARACTERISTICS

	STANDARD SUPPLY	UPON REQUEST
Contact parts	AISI 304	AISI 316L
Exterior finish	Satin finish 180 mesh	Polishing Ra4
Interior finish	2B	Polishing Ra4
Gaskets	NBR	Food-NBR (FDA)
Seals	PUR wear-resistant	Food-PUR (FDA)
Connections	Fast-unlock (Captive screws)	Knobs
Optionals	See specific document	

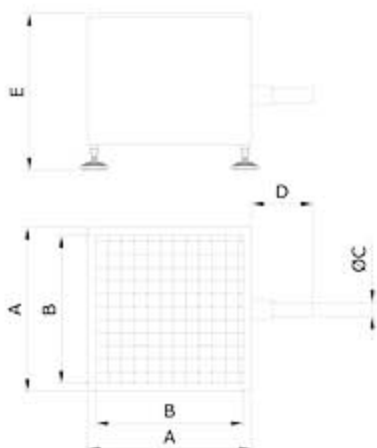




W SERIES SCREW DOSERS

The W series screw dosers unite different requirements in a single solution: precision, dosing constancy and ease when disinfecting the machine in the exchange operations of the powder to be dispensed. The W series dosers provided with extraction screws guarantee a homogenous flow of material thanks to the full implementation of the screws machine processed for a perfect fit. Their elastomer body lends itself to a fast product change thanks to its easy removal. Available both in volumetric as well as gravimetric version with load cell electronic weighing system ensure accuracy and reliability. Used in different configurations in all industrial sectors, from food to chemical and, in the dedicated versions, completely in stainless steel AISI 316L in the pharmaceutical industry. Especially indicated for very fine powders. Available also in version for the food sector and the ATEX zone.

The hourly flow of work, depending on the size of the doser, ranges from kg to 7.00 t / h. The various configurations available make them suitable for the treatment of materials that are very different in particle size, flowability and bulk density. Available also in version for ATEX zone.



DIMENSIONS

MODEL	A	B	C	D	E
WSV040	400	360	35	150	320
WRV040	400	360	35	150	320
WRV050	600	550	45	150	420
WMV050	600	550	45	150	420
WLV100	800	740	100	250	640

CAPACITY

MODEL	dm ³ /h								
	1	10	15	50	150	200	500	1000	2000
WSV040	Yellow	Yellow	Yellow						
WRV040		Green	Green	Green	Green				
WRV050				Blue	Blue	Blue	Blue		
WMV050				Blue	Blue	Blue	Blue		
WLV100							Red	Red	Red

TECHNICAL CHARACTERISTICS

	STANDARD	ON REQUEST
Contact parts	NBR	NBR supply (FDA)
External finishing	Satinizing 180 mesh	Ra4 polishing
Gaskets	NBR	NBR supply (FDA)
Seals	PUR wear resistant	PUR supply (FDA)



R SERIES TWIN SCREW SCREW DOSERS

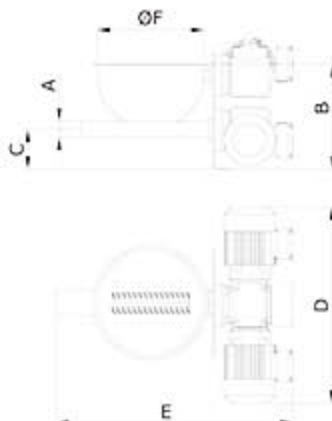
The R series twin screw dosers unite different requirements in a single solution: precision, constancy in dosing and ease of disinfecting the machine in the operations changing the powder to dose.

The R series dosers provided with twin extraction screws guarantee a homogenous flow of material thanks to the full implementation of the screws machined for a perfect fit besides from the perfect homogenisation of material in the semispherical cap. The R series twin screw dosers are designed for the dosing of materials in powder and synthetic fibre. Available also in volumetric and gravimetric version with load cell electronic weighing system guaranteeing precision and reliability. They are used in different configurations in all the industrial sectors, from food to chemical and, in dedicated versions, completely in stainless steel AISI 316L in the pharmaceutical sector. Especially indicated for very fine powders.

Available also in version for the food sector and the ATEX zone. The hourly working capacity, depending on the size of the doser, are from 0.01kg to 7.00 t/h.

The different configurations available make them ideal for treating materials that are very different in particle size, flowability and density.

Available also in version for ATEX zone



DIMENSIONS

MODEL	A	B	C	D	E	F
RSV020D	20	300	80	450	560	300
RRV030D	30	350	90	500	650	300
RMV040D	40	450	100	600	820	400
RLV060D	60	550	150	750	1100	400

CAPACITY

MODEL	dm ³ /h								
	1	10	15	50	150	200	500	1000	2000
RSV020D	Yes	Yes	Yes	No	No	No	No	No	No
RRV030D	No	Yes	Yes	Yes	Yes	No	No	No	No
RMV040D	No	No	No	Yes	Yes	Yes	Yes	No	No
RLV060D	No	No	No	No	No	Yes	Yes	Yes	Yes

TECHNICAL CHARACTERISTICS

	STANDARD	ON REQUEST
Contact parts	AISI 304	AISI 316L
External finishing	Satinizing 180 mesh	Ra4 polishing
Internal finishing	2B	Ra4 polishing
Gaskets	NBR	NBR supply (FDA)
Seals	PUR wear resistant	PUR supply (FDA)
Connections	Clamp	



GM SERIES SCREW FEEDERS FOR FIBROUS AND GROUND FLAKES

The GM Series single screw feeders are ideal for feeding synthetic stringy or irregular shaped materials after the grinding process (flakes). Available in both volumetric and loss-in-weight versions with electronic load cell system, they ensure accuracy and reliability.

They are used in different configurations in all applications in which it is necessary to re-use recycled plastics (ground and flakes) or to feed binding agents (fibres) in building or plastic compounds in order to increase their mechanical resistance. They are also available in ATEX release. The hourly flow rates, depending on the size of the feeder, go from 70 kg up to 7 t/h.

DIMENSIONS

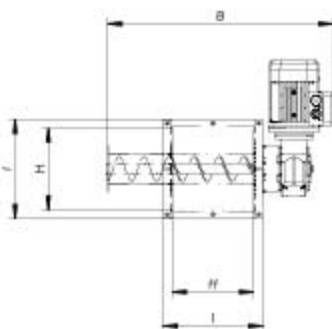
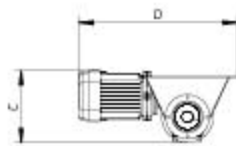
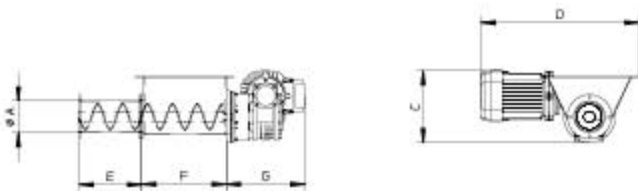
MODEL	A	B	C	D	E	F	G	H	I
GM60	60	544	173	382	150	204	190	200	240
GM80	80	577	213	422	150	204	223	200	240
GM100	100	612	223	462	150	204	258	200	240

CAPACITY

MODEL	litres/h						
	125	250	800	1600	3200	6500	13000
GM60							
GM80							
GM100							

TECHNICAL CHARACTERISTICS

	STANDARD SUPPLY	UPON REQUEST
Contact parts	AISI 304	
Exterior finish	Satin finish 180	
Interior finish	2B	
Gaskets	NBR	
Seals	PUR wear resistant	
Connections	Fast-unlock (captive screws)	Knobs
Optionals	See specific document	



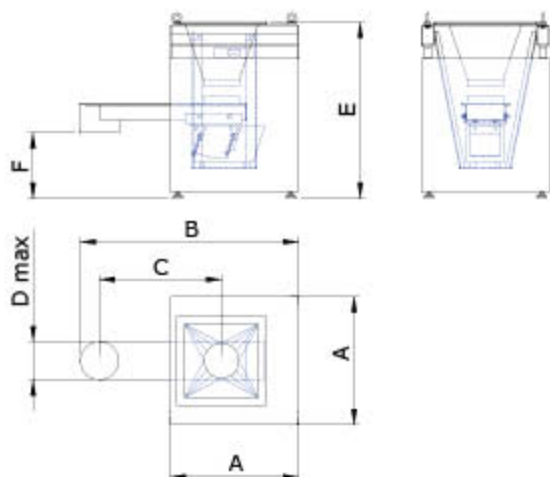


C SERIES VIBRATING CHANNEL FEEDERS

The C Series vibrating channel feeders, thanks to their operating principle, feed every product without damaging it mechanically or affecting its exterior. This distinctive feature makes them suitable for feeding weak raw materials, irregular sizes such as tablets, dragées, granules, flakes and stringy products. Available in both volumetric and loss-in-weight releases with electronic twin load cell system, they ensure accuracy and reliability. They are used in the various configurations in all the industrial sectors, from plastics, to the food industry in the dedicated releases, completely made of AISI 316L stainless steel, in the chemical and pharmaceutical industries.

The different available configurations make them suitable for processing large materials with very different fluidity and density. They are also available in ATEX release.

The hourly operating feed rates, depending on the size of the dispenser start from 0.3 kg up to 4.00 t/h



DIMENSIONS

MODEL	A	B	C	D	E	F
CSV	400	600	375	50	550	200
CRV	400	600	370	70	600	200
CMV	500	800	500	125	700	250
CLV	600	900	500	250	750	250

CAPACITY

MODEL	dm ³ /h										
	1	10	50	100	200	500	1000	1500	2500	3000	4000
CSV	Yes	Yes	Yes								
CRV		Yes	Yes	Yes	Yes	Yes					
CMV					Yes	Yes	Yes	Yes			
CLV							Yes	Yes	Yes	Yes	Yes

TECHNICAL CHARACTERISTICS

	STANDARD SUPPLY	UPON REQUEST
Contact parts	AISI 304	AISI 316L
Exterior finish	Satin finish 180	Polishing Ra4
Interior finish	2B	Polishing Ra4
Gaskets	NBR	NBR food (FDA)
Seals	PUR wear resistant	PUR food (FDA)
Connections	Fast-unlock (captive screws)	Knobs
Optionals	See specific document	

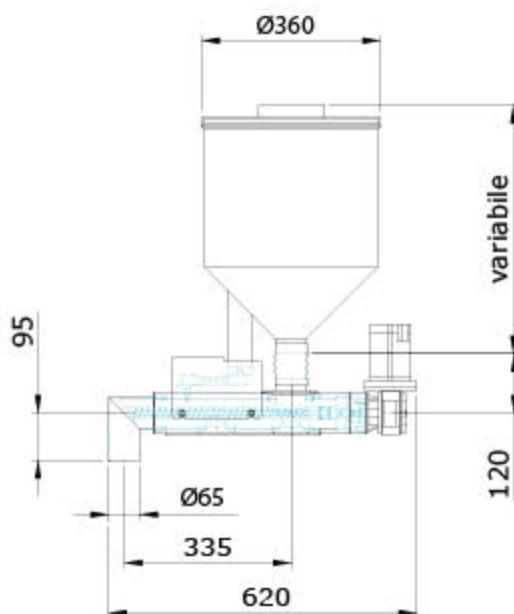


G SERIES SCREW FEEDERS FOR GRANULATED MATERIALS

Definitive Innovation's G Series screw feeders are used for the loss-in-weight dosage of granular shaped bulk materials.

The composition of the various sizes and the flexibility of each component create the possibility of having compact feeding units that are easy to use.

The ease with which they can be dismantled makes faster the cleaning and the screw replacement.



DIMENSIONS

MODEL	Ø external	Ø Internal	Pitch	Flow min litres/h	Flow min litres/h
XSG015M1S	15	6	8	3	15
XSG015M2S	15	6	15	6	30
XSG016M1S	16	6	8	5	20
XSG016M2S	16	6	10	5	22
XSG019M1S	19	6	12	10	40
XSG020M1S	20	6	12	10	42
XSG020M2S	20	10	20	15	55
XSG023M1S	23	7	20	24	90
XSG025M1S	25	7	20	28	110
XSG025M2S	25	7	25	35	135
XSG029M1S	29	6	20	37	150
XSG029M2S	29	7	29	55	220
XSG030M1S	30	7	30	60	240
XSG030M2S	30	15	30	45	190
XSG035M1S	35	7	35	95	400
XSG038M1S	38	7	38	125	500
XSG040M1S	40	20	40	115	450
XSG060M1S	60	30	60	380	1500

TECHNICAL CHARACTERISTICS

	STANDARD SUPPLY	UPON REQUEST
Material body	Aluminium	
Material dosage screw	Carbon steel	
Material hopper	AISI 430	AISI 304
Reducer	Worm screw	
Motor	Three-phase B14 IP54	Brushless
Connections	Rapid release	



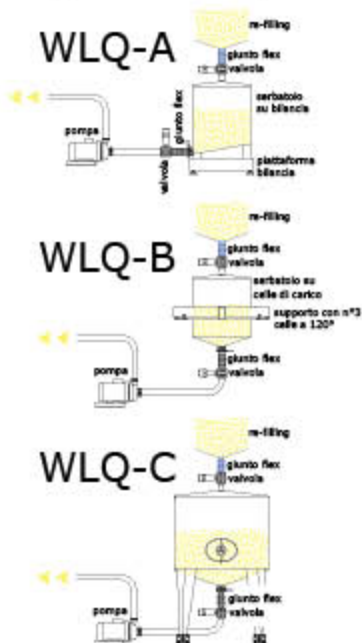
DOSING SYSTEM FOR LIQUIDS WLQ SERIES

The dosing systems for liquids of the Definitive Innovation WLQ series are the most precise and versatile for dosing liquids of all types and viscosity.

When the objective is extreme precision the system is based on diverse aspects:

- the choice of the weighing system (A-B-C-);
- the type of pump to use (lobe, diaphragm, peristaltic...);
- The dynamic reading logic of the signal supplied by the installed components.

An accurate software prepared by Definitive Innovation is able to manage doses in continuity or in batches with extremely low flow rates. It further manages different phases of the production cycle such as the refilling of the tank.

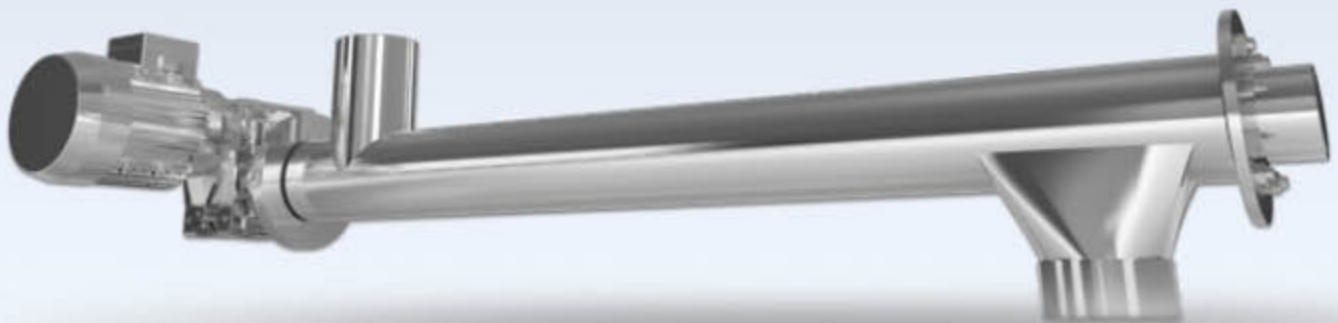


CAPACITY

LITRES/h	WLQ-A	WLQ-B	WLQ-C
up to 2	👍	👍	👎
from 2 to 20	👍	👍	👍
from 20 to 100	👍	👍	👍
from 100 to 500	👍	👍	👍
from 500 to 1000	👎	👍	👍
from 1000 to 1000	👎	👍	👍

TECHNICAL CHARACTERISTICS

	STANDARD	ON REQUEST
Tank	ANSI 304	ANSI 316L
External finishing	Satinizing 180 mesh	Ra 0.4 polishing
Internal finishing	2B	Ra 0.4 polishing
Gaskets	NBR	NBR supply/PTFE
Load cell A	Off-center	PUR supply (FDA)
Load cell B	Compressed	
Load cell C	Compressed	
Pumps	Dimensions to dose according to the liquid technical card	



SC SERIES TRANSPORT SCREW

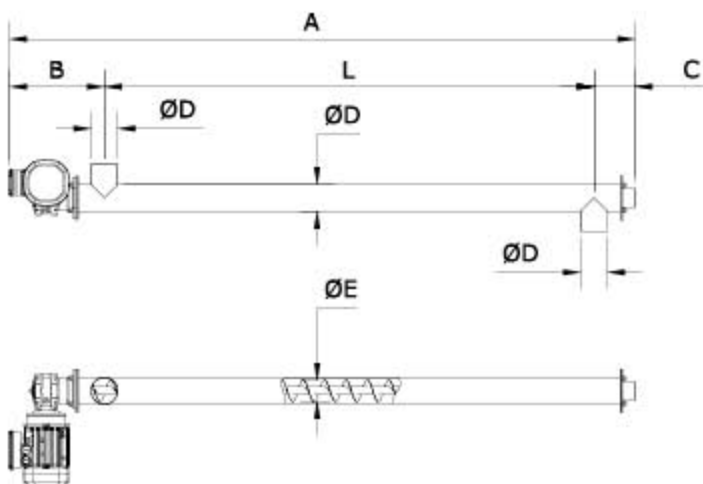
The SC Series screws, simply and carefully constructed, easy to install, are the most reliable for transporting bulk materials continuously. The compact construction and the wide range of accessories included make them versatile and reliable in different sectors of application. Made in AISI 304 stainless steel, they have a tubular body, an opening for loading and one for unloading with welded coupling flanges, a rotating spiral with quick connection attachments both to the motorization and to the end support. The easily replaceable outer P.T.F.E. seals make them reliable for sectors that are particularly demanding in terms of uses.

DIMENSIONS

MODEL	A	B	L min	L max
SC080	80	101	800	2000
SC100	100	114	1000	2500
SC120	120	139	1000	4000
SC150	150	168	1000	4000

CAPACITY

MODEL	m ³ /h					
	1	5	10	15	20	25
SC080						
SC100						
SC120						
SC150						



TECHNICAL CHARACTERISTICS

	STANDARD SUPPLY	UPON REQUEST
Construction material body	AISI 304	AISI 316L
Construction material coil	AISI 304	AISI 316L
Material seals	PTFE.	Wear-resistant PUR
External finishes	Satin finish	Polishing
Internal finishes	2B	Polishing
Options	Custom inlets	
	Wear-resistant coatings	
	Supplemental inlets	

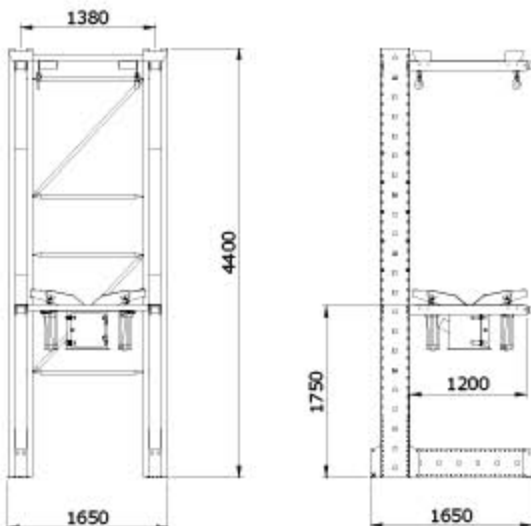


EBQ SERIES AUTOMATIC BIG-BAG EMPTYING STATION

The EBQ station is the ideal device for unloading BIG-BAGS. An efficient cloverleaf shaking system operated by electropneumatic pistons ensures a high level of operating comfort even with materials that are difficult to extract. Thanks to a complete range of accessories we are able to configure the big-bag emptying station to the specific demands of the customer. Also available as ATEX 22-compliant release.

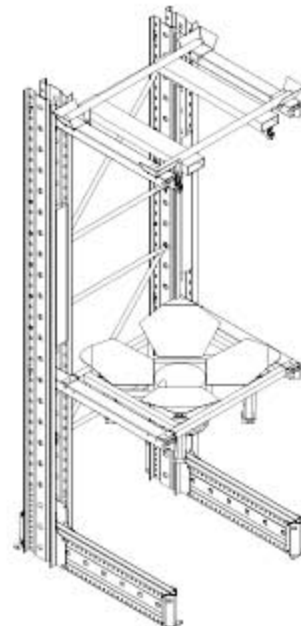
EBQ 00 Model

Designed for unloading automatically Big-Bags, the EBQ model is composed of a cantilevered galvanized steel frame and a base formed by 4 petals with pneumatic shaking pistons which in an alternating manner twist the Big-Bag so it can be emptied completely. The maximum allowed load is 1 ton.



TECHNICAL CHARACTERISTICS

	STANDARD SUPPLY	UPON REQUEST
Material	Carbon steel	AISI 304
Command and operation	Pneumatic box	
Maximum load	1,0 ton.	
Max bag size	2 mc	
Loading system	LIFT	
Shuttering system		Baffle
Compatible extraction system	Screws and pn. transport	
Supply risk environment		ATEX ZONE 2 D





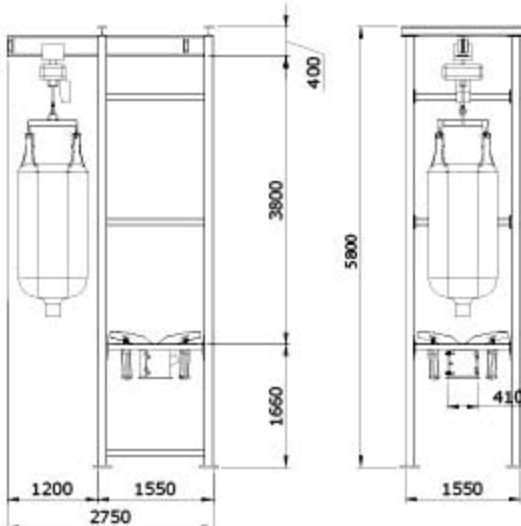
EBQ SERIES AUTOMATIC BIG-BAG EMPTYING STATION

The EBQ station is the ideal device for unloading BIG-BAGs. An efficient cloverleaf shaking system operated by electropneumatic pistons ensures a high level of operating comfort even with materials that are difficult to extract. Thanks to a complete range of accessories we are able to configure the big-bag emptying station to the specific demands of the customer. Also available as ATEX 22-compliant release.

EBQ 01 Model

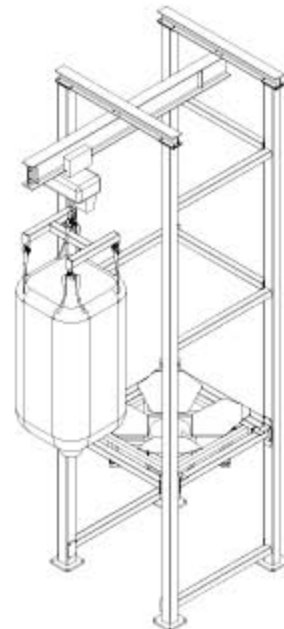
Designed for unloading automatically Big-Bags, the EBQ01 model is made of a painted carbon steel frame which encloses the base formed by 4 petals with pneumatic shaking pistons which in an alternating manner twist the bag so it can be emptied completely.

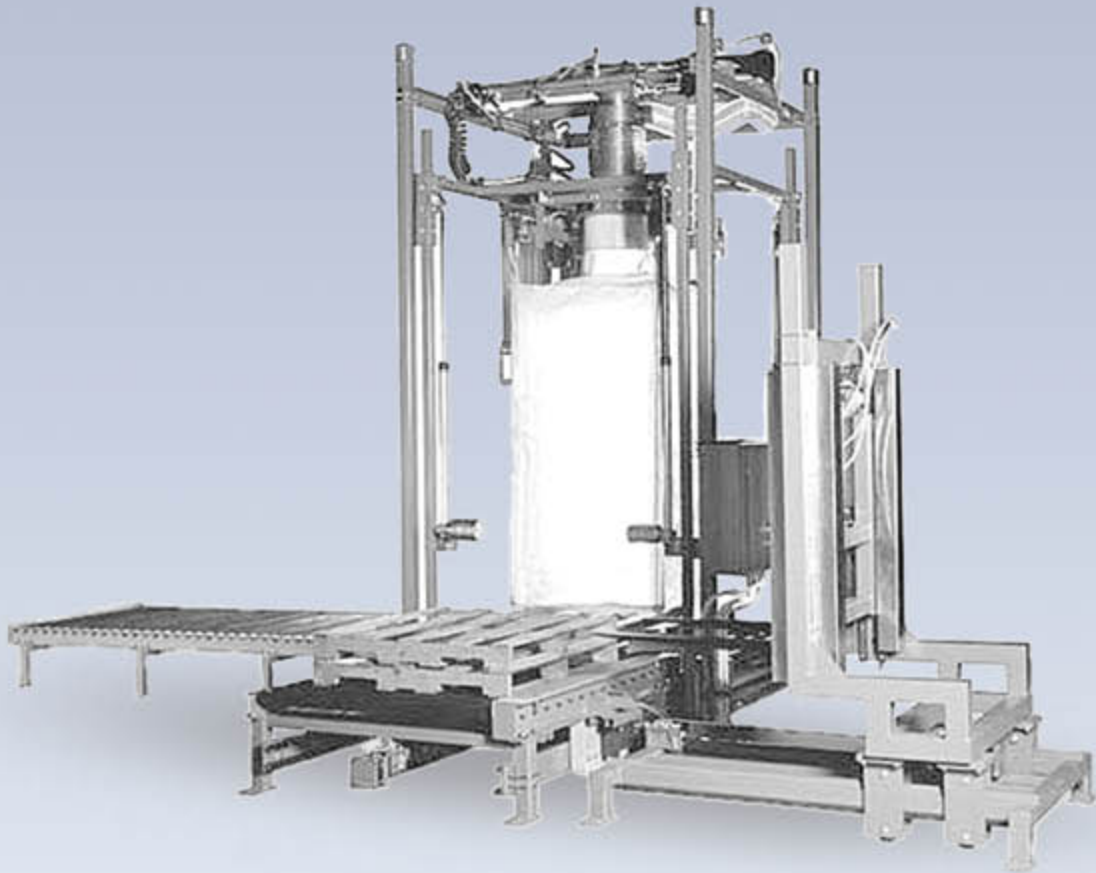
The standard hoist allows the bag to be lifted quickly and moved towards the centre of the machine where it will be emptied.



TECHNICAL CHARACTERISTICS

	STANDARD SUPPLY	UPON REQUEST
Material	Carbon steel	AISI 304
Command and operation	Electro-pneumatic box	
Maximum load	1,0 ton.	
Max bag size	2 mc	
Loading system	Electric hoist	
Shuttering system		Baffle
Compatible extraction system	Screws and pn. transport	
Supply risk environment		ATEX ZONE 2 D





RBB SERIES AUTOMATIC BIG-BAG FILLING

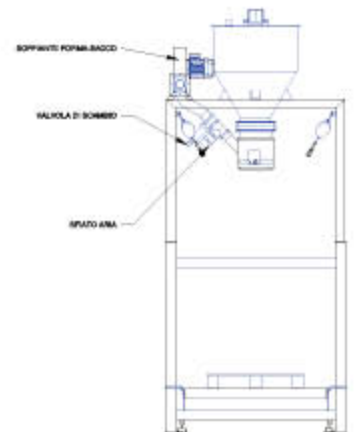
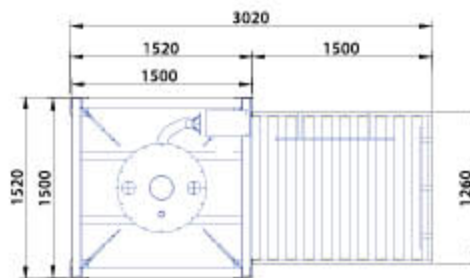
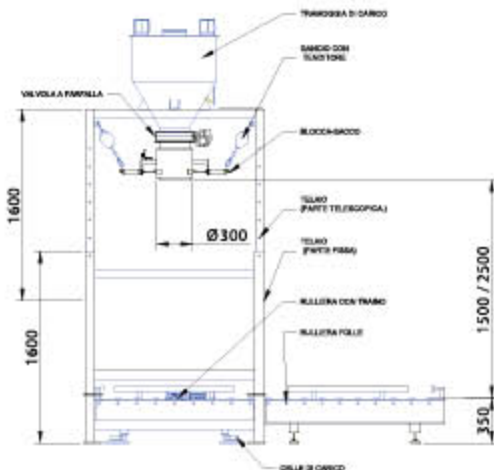
The RBB station is the ideal device for filling while controlling the weight of BIG-BAGS. Its ease of use, combined with the reliability of the various weighing systems (weighing roller or platform, depending on the withdrawal method of the filled big-bag), make the RBB station an extremely customized station for handling installations. Thanks to a complete range of accessories we are able to configure the big bag filling station according to the specific demands of the customer. Available in a version compliant with ATEX 22 zone.

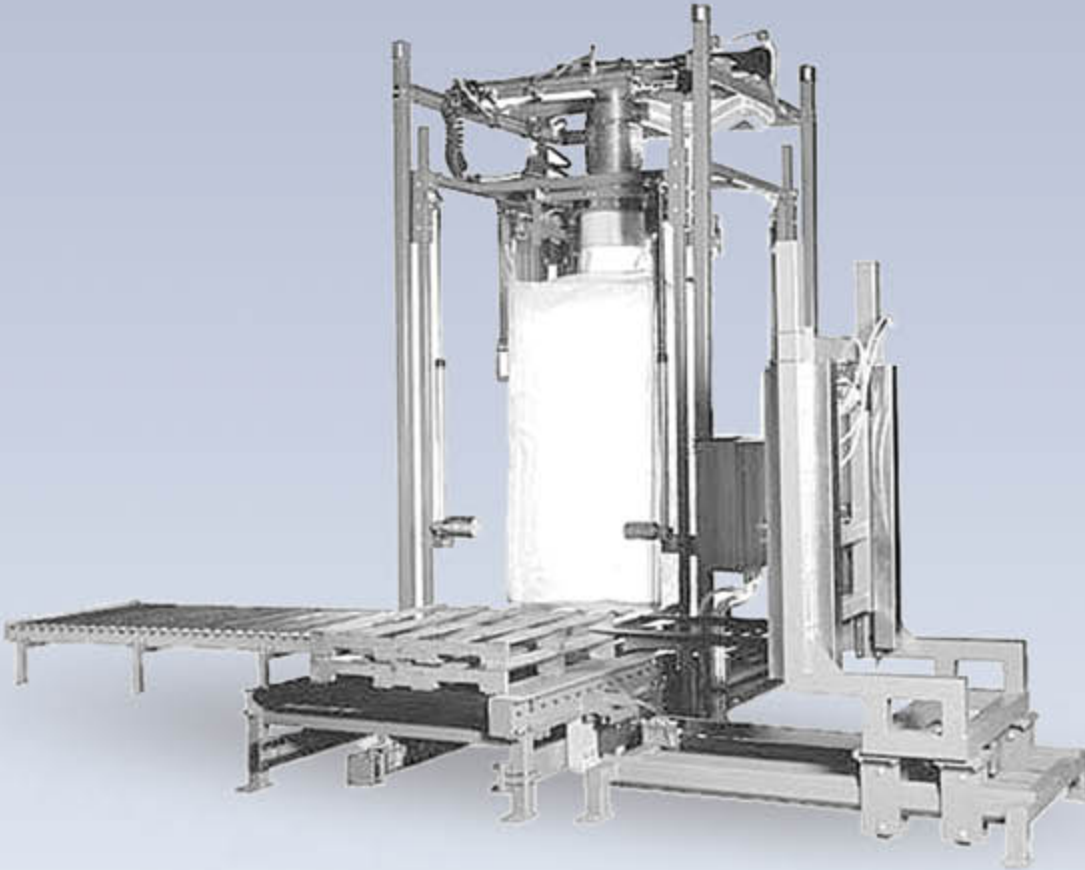
RBB 01 Model

Designed to automatically fill Big-Bags, the RBB-01 is formed by a quadrangular telescopic frame for accommodating the different heights of the Big-Bags, a motorized roller on load cells (to read the weight reached) and an idle roller for accommodating the Big-Bags that are already filled and awaiting collection by the operator.

TECHNICAL CHARACTERISTICS

	STANDARD SUPPLY	UPON REQUEST
Material	Carbon steel	AISI 304
Command and operation	Electropneumatic box	
Weighing system	Roller mtr on load cell	
Maximum load	2,0 ton.	
System of full bag withdrawal	From roller mtr to idle roller	
Max. bag size	2 mc	
Supply system		Lung hopper
Big-Bag shuttering system	Butterfly valve	
Supply risk environment		ATEX zona 2 D
Optionals or supplemental machines	See specific documentation	





RBB SERIES AUTOMATIC BIG-BAG FILLING

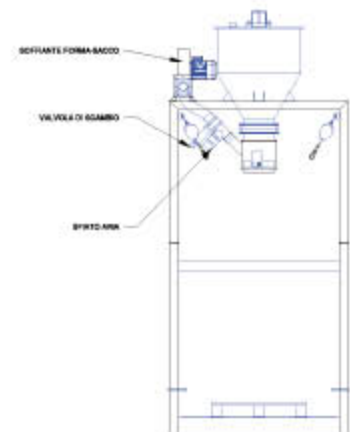
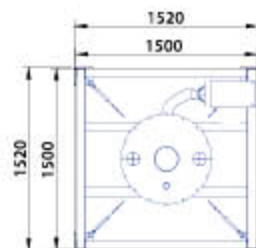
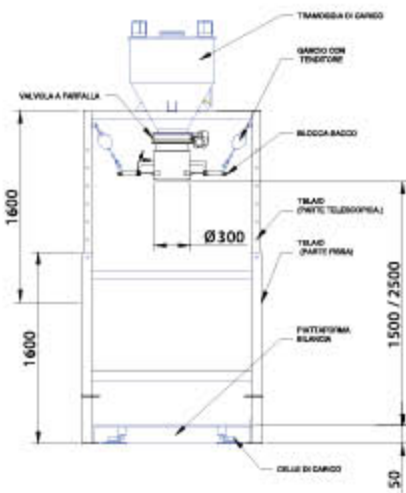
The RBB station is the ideal device for filling while controlling the weight of BIG-BAGS. Its ease of use, combined with the reliability of the various weighing systems (weighing roller or platform, depending on the withdrawal method of the filled big-bag), make the RBB station an extremely customized station for handling installations. Thanks to a complete range of accessories we are able to configure the big bag filling station according to the specific demands of the customer. Available in a version compliant with ATEX 22 zone.

RBB 02 Model

The RBB-02 model is formed by a quadrangular telescopic frame to accommodate the different heights of the Big-Bags and scale balance placed at the base (to read the weight reached).

TECHNICAL CHARACTERISTICS

	STANDARD SUPPLY	UPON REQUEST
Material	Carbon steel	AISI 304
Command and operation	Electropneumatic box	
Weighing system	Platform on load cells	
Maximum load	2,0 ton.	
System of full bag withdrawal	Manual	
Max. bag size	2 mc	
Supply system		Lung hopper
Big-Bag shuttering system	Butterfly valve	
Supply risk environment		ATEX zona 2 D
Optionals or supplemental machines	See specific documentation	

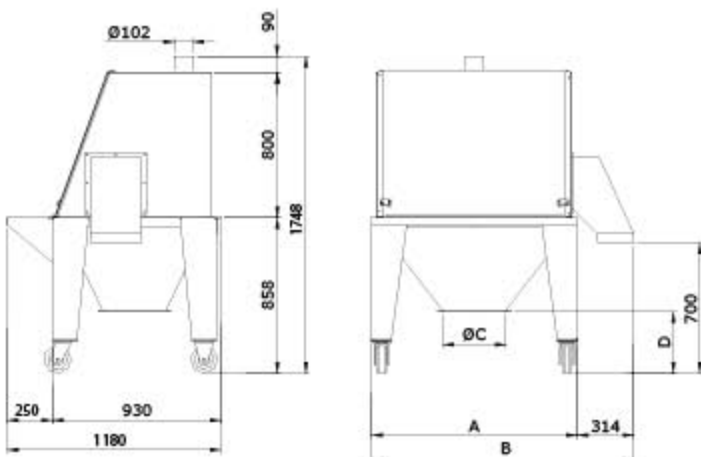




SSM SERIES MANUAL BAG EMPTYING DEVICE

The SSM Series manual bag emptying device is used to empty bags containing powder or granular material.

Made of AISI 304 stainless steel as a standard, it can also be created in a completely closed release for use with hazardous materials. It can be equipped with an automatic cutting system (optional), latex gloves for handling toxic and/or hazardous substances, or connected to an expulsion/compaction system of the empty bags. The machine is ready to be connected with a centralized suction system or equipped with a bag or cartridge filter



DIMENSIONS

MODEL	A	B	C	D
SSM B01	1136	1450	350	350
SSM B02	1136	1450	600	600
SSM F01	1136	1450	350	350
SSM F02	1136	1450	600	600

TECHNICAL CHARACTERISTICS

	STANDARD SUPPLY	UPON REQUEST
Contact parts	AISI 304	AISI 316L
Exterior finish	Satin finish 180	Polishing Ra4
Interior finish	2B	Polishing Ra4
Gaskets	NBR	Food-NBR (FDA)
Front hatch	Transparent polycarbonate	AISI 304

OPTIONALS

TYPE	SSM B01	SSM B02	SSM F01	SSM F02
Kit for material withdrawal with pneumatic transport	✓	✗	✓	✗
Flat-bottomed extractor	✗	✓	✗	✓
Latex gloves on polycarbonate hatch	✓	✓	✓	✓
Automatic sack cutting	✓	✓	✓	✓
Sprayer with knurled rollers	✗	✓	✗	✓
Bag filter with built-in extractor	✗	✗	Standard	Standard



TPN SERIES LOADING/UNLOADING HOPPERS

The Series TPN hoppers are designed to satisfy multiple needs in the various industrial processes which involve bulk materials in powder or granulate. Being supplied with different accessories, they are suitable for carrying out different functions such as:

- Containers of semi-processed products waiting for an additional processing cycle (transferable bins on wheels).
- Hoppers for the manual or automatic emptying of powders to be transferred mechanically (screws, conveyor belts, feeders) or pneumatically (vacuum transport in dense, semi-dense or diluted phase or under pressure from blowers).
- Refill hoppers for supplying feeders.

Their modularity allows the amount they can contain to be increased easily. The stainless steel construction material makes them appropriate in different sectors such as food, chemical and pharmaceutical industry.

DIMENSIONS

MODEL	Capacity (Lt)	Diameter	Height
TPN005	5	300	300
TPN010	10	400	500
TPN030	30	400	600
TPN070	70	400	1000
TPN100	100	600	900
TPN150	150	600	1100
TPN200	200	600	1400
TPN300	300	800	1300
TPN400	400	800	1500



BWF SERIES BELT WEIGHT FEEDERS

The BWF Series belt feeders are used to feed every type of material even with very irregular grain size. A strong aluminium frame ensures its rigidity; the integrated twin load cell system and the calibrated feeder ensure accuracy of feeding to the maximum required standards.

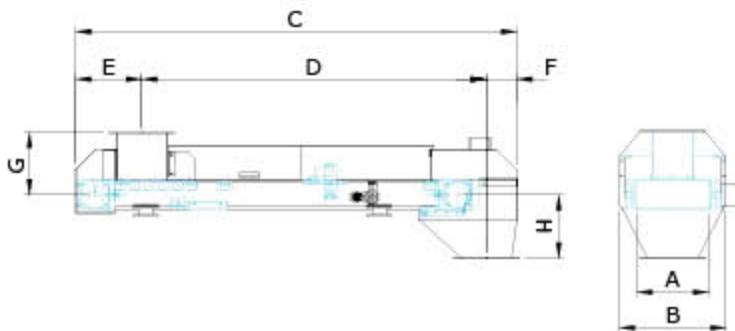
Available in open release or totally enclosed for maximum protection and environmental cleanliness. Feed rates up to 80 t/h.

DIMENSIONS

MODEL	A	B	C	D	E	F	G
BW025	250	450	1900	1500	250	150	200
BW035	350	550	2300	1800	350	150	300
BW055	550	800	3300	2500	550	250	400
BW080	800	1100	4200	3000	800	400	500
BW120	1200	1500	5200	3500	1200	500	600

CAPACITY

MODEL	m ³ /h										
	0,1	5	10	15	20	25	30	35	40	50	80
BW025	Yes	Yes	Yes								
BW035		Yes	Yes	Yes	Yes	Yes					
BW055				Yes	Yes	Yes	Yes	Yes			
BW080							Yes	Yes	Yes		
BW120									Yes	Yes	Yes



TECHNICAL CHARACTERISTICS

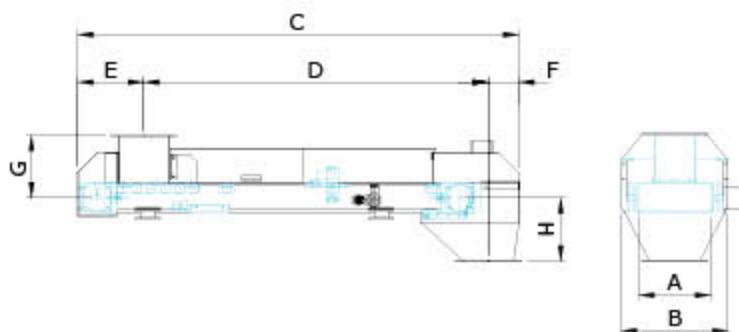
	STANDARD SUPPLY	UPON REQUEST
Chassis material	Aluminium	Fe 360 - AISI 304
Feeder material	PVC	Food, wear resistant
Feeder centering system	Convex rollers	Pneumatic device
Feeder tension system	Manual	Counterweight
Feeder cleaning system	Wear resistant scrapers	PTFE Scrapers
Weight monitoring system	2 cell loading bridge	Version ATEX zone 2D
Speed monitoring system	Encoder	Version ATEX zone 2D
Optionals	See specific document	



BC SERIES BELT CONVEYOR FEEDERS

The BC Series BC conveyor feeders are used to convey every type of material even with very irregular grain size. A vast series of accessories and optional devices make them customized for continuous and heavy uses.

Available in open release or totally enclosed for maximum protection and environmental cleanliness. Feed rates up to 80 t/h.



DIMENSIONS

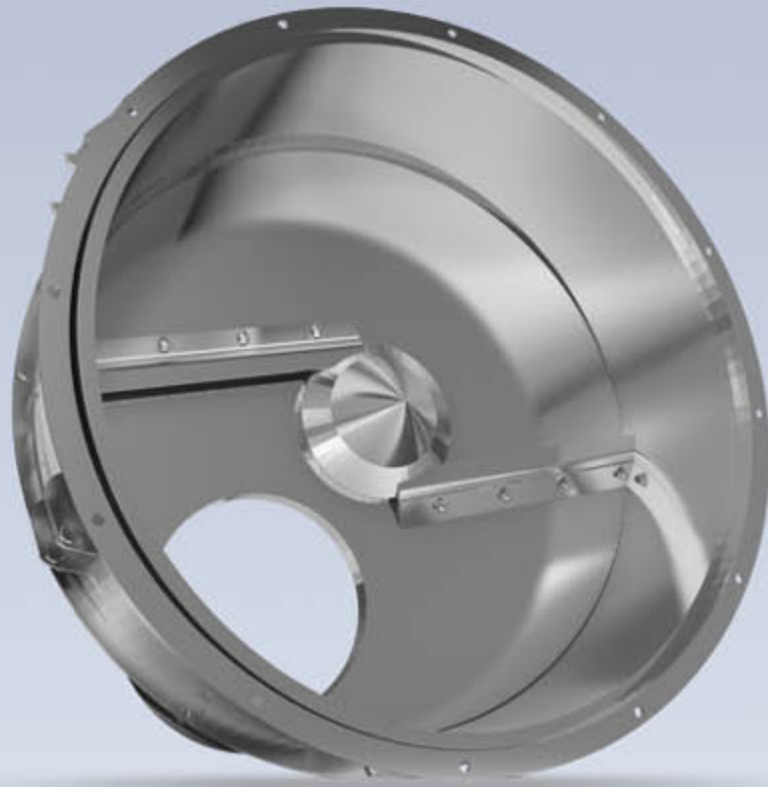
MODEL	A	B	C max	D max	E	F	G
BC025	250	450	10400	10000	250	150	200
BC035	350	550	1500	12000	350	150	300
BC055	550	800	15800	15000	550	250	400
BC080	800	1100	22000	20000	800	400	500
BC120	1200	1500	23800	20000	1200	500	600

CAPACITY

MODEL	m ³ /h										
	0,1	5	10	15	20	25	30	35	40	50	80
BC025	■	■	■								
BC035		■	■	■	■	■					
BC055					■	■	■	■			
BC080							■	■	■		
BC120									■	■	■

TECHNICAL CHARACTERISTICS

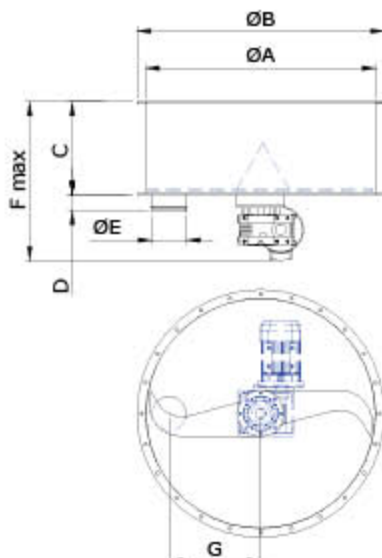
	STANDARD SUPPLY	UPON REQUEST
Chassis material	Aluminium	Fe 360 - AISI 304
Feeder material	PVC	Food, wear resistant
Feeder centering system	Convex rollers	Pneumatic device
Feeder tension system	Manual	Counterweight
Feeder cleaning system	Wear resistant scrapers	PTFE Scrapers
Optionals	See specific document	



FBE SERIES FLAT-BOTTOM EXTRACTOR

The FBE flat-bottom extractor by Definitive Innovation, is the component suitable for the controlled extraction of all those bulk materials with poor fluidity. It is particularly useful in applications where it is absolutely necessary to extract the material without the help of strikers, liquefiers, vibrators, where problems of bridges and mouse holes must be avoided.

The cylindrical shape makes it preferred also in all those applications in which the small spaces would not allow the same containment capacities with conventional cone-shaped geometries. The flexibility of this component allows it to be placed directly in the lower part of a silo, to be used as a refilling hopper, storage bin, small daily silo, or simply as a feeder hopper.



DIMENSIONS

MODEL	A	B	C	D	E	F	G
FBE060	600	700	400/1000	50	100	800/1400	230
FBE080	800	900	400/1000	50	150	800/1400	295
FBE100	1000	1140	400/800	100	200	800/1400	370
FBE120	1200	1340	500	100	250	1000	445
FBE150	1500	1660	500	100	300	1100	550

TECHNICAL CHARACTERISTICS

	STANDARD SUPPLY	UPON REQUEST
Contact parts	AISI 304	AISI 316L
Exterior finish	Satin finish 180 mesh	Polishing Ra4
Interior finish	2B	Polishing Ra4
Gaskets	NBR	Food-NBR (FDA)
Shuttering system	Butterfly valve	Knife gate valve
Lateral door for inspection/maintenance/cleaning	n°1	
Safety Micro switch on the inspection door	Si	
Level Indicator min/max (if requested)	Blades	Vibration
Bin release with manual loading (up to Ø 800)	Cover + grille	
Bin release with manual loading (up to Ø 800)	Feet	Wheels



SINGLE PHASE PNEUMATIC LOADERS "AMG" SERIES

The AMG series single-phase pneumatic loaders are very simple and are usually used for feeding granules and reground materials in the plastics processing equipment.

Their ductility together with the easy programming allows the user to set the best working cycle, avoiding inappropriate automation costs.

DIMENSIONS

MODEL	A	B	C	D	E	F
AMG001	170	300	195	4	7	430
AMG002	170	300	195	4	7	490
AMG005	230	370	256	6	9	625
AMG008	230	370	256	6	9	725
AMG012	230	370	256	6	9	850

CAPACITY WITH GRANULE (P.S. 0,6)

MODEL	dm ³ /h							
	40	60	80	100	150	250	250	300
AMG001	6							
AMG002	3	5						
AMG005	15	12	10	8	4			
AMG008			20	15	10	4		
AMG012				22	18	10	4	

The distance in horizontal is indicated in the boxes



TECHNICAL CHARACTERISTICS

MODEL	CAPACITY	WATT MOTOR	KPa DEPRESSION	WEIGHT Kg
AMG001	850	850	19	7
AMG002	850	850	19	8
AMG005	1000	1000	19	11
AMG008	1000	1000	20	12
AMG012	1000	1000	23	13



"AJM" SERIES PNEUMATIC LOADERS

AJM series pneumatic loaders are the most effective and economical and can be used for the feeding of granules for plastic processing machines up to a flow rate of 400 kg/h. The compressed air supply system makes them extremely versatile and reliable thanks to their system of fully automatic operation.

They can also be used with powders that are extremely flowable thanks to the filtering membrane with compressed air cleaning.

Their easy programming allows the user to set the best working cycle, avoiding inappropriate automation costs.



N° FORI "D" "ØE"



DIMENSIONS

MODEL	A	B	C	D	E	H
AJM001	250	300	195	4	7	550
AJM002	250	300	195	4	7	650
AJM005	350	370	256	6	9	650

CAPACITY WITH PLASTIC GRANULE

MODEL	dm ³ /h							
	50	100	150	200	250	300	350	400
AJM001	15	8	3					
AJM002		12	9	6	3			
AJM005				15	12	9	6	3

The distance in horizontal is indicated in the boxes

CAPACITY WITH FLOWABLE POWDERS

MODEL	dm ³ /h							
	50	100	150	200	250	300	350	400
AJM001	6	3						
AJM002	12	9	6	3				
AJM005			15	12	9	6	3	

The distance in horizontal is indicated in the boxes

TECHNICAL CHARACTERISTICS

	STANDARD	ON REQUEST
Contact parts	AlSi 304	AlSi 316L
External finishing	Polishing	Polishing
Internal finishing	2B	Polishing
Gaskets	NBR	NBR supply (FDA)
Connections	Calmp	



"ATG" SERIES TRIPHASE PNEUMATIC LOADERS

The ATG series pneumatic loaders are indispensable components for the feeding of different types of granules and reground materials in the complex plastics processing systems.

Their flexibility, the various accessories available, allow the set up of articulated systems that are, however, very simple to control thanks to the communication via BUS connection on the centralised system (meaning controlled by a single electrical panel and with the use of the same vacuum pump for several loaders).

DIMENSIONS

MODEL	A1	A2	B	C	D	E
ATG008	220	220	256	40	40	630
ATG011	220	220	256	40	40	750
ATG012	220	220	256	50	50	750
ATG019	220	280	256	50	50	750
ATG020	220	280	256	50	50	750
ATG050	220	320	256	60	60	1150
ATG100	320	640	380	60	60	1350

CAPACITY WITH GRANULE (P.S. 0,6)

MODEL	dm ³ /h							
	300	600	900	1200	1500	1800	2100	2400
ATG008	4							
ATG011	25	4						
ATG012	30	5						
ATG019	35	20	3					
ATG020	30	25	5					
ATG050			60	40	5	3		
ATG100				60	45	35	5	3

The distance in horizontal is indicated in the boxes



TECHNICAL CHARACTERISTICS

MODEL	CAPACITY Lt.	Ø SUCTION	WEIGHT Kg	PUMP COMBINED KW	DECIBEL
ATG008	8	40	25	0.75	64
ATG011	12	40	36	1.1	68
ATG012	12	50	41	2.2	72
ATG019	20	50	44	2.2	72
ATG020	20	50	85	4	74
ATG050	50	60	135	7.5	78
ATG100	100	60	160	7.5	78



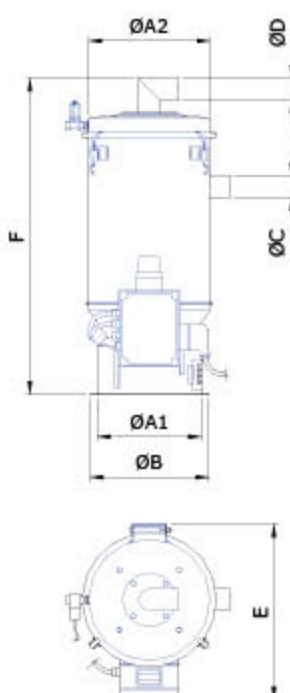
CTP SERIES THREE-PHASE LOADERS

The CTP Series three-phase loaders are adopted to pneumatically (suction) receive free flowing powders that are extremely fluid with bare density greater than 0.5 and smaller than 1.2 kg/dm³.

The can operate individually, connected to a suction unit, or in batteries composed of several loaders connected centrally to the same suction unit. This operation is done alternating or according to a booking logic.

DIMENSIONS

MODEL	Litres	A1	A2	B	C	D	E	F
CTP008	8	225	225	275	40	50	350	630
CTP012	12	225	225	275	40	50	350	750
CTP020	20	225	280	275	50	50	420	750
CTP050	50	225	350	275	50	50	420	1300
CTP100	100	350	650	400	70	70	650	1350



TECHNICAL CHARACTERISTICS

TYPE	8	12	20	50	100
Power	400V 50 Hz				
Kw max pump	0,75	2,2	4	7,5	7,5
Noise dB/A	64	72	74	78	78
Load max. litres/h	350	450	850	1600	2200
Maximum length m	15	35	35	50	50
Filter	Membrane in PTFE				
Cleaning filter	Timed compressed air				
Load cycle	Programmable time pause/work				
Level indicator	Magnetic				
Input of work	From external contact				
Type of discharge	Clapet valve				
Body material	AISI 430 (RISI 304-316L upon request)				
Gasket material	NBR (food-NBR upon request)V				



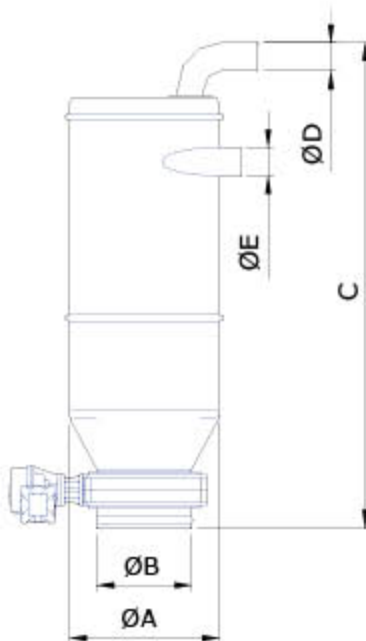
CTF SERIES THREE-PHASE LOADERS

The CTF Series three-phase loaders are adopted for receiving free flowing powders pneumatically (suction).

They can operate individually, connected to a suction unit, or in sets composed of several loaders centrally connected to the same suction unit; this operation is done in alternating mode or according to a booking logic.

DIMENSIONS

MODEL	Litres	A	B	C	D	E
CTF030	30	200	300	1050	30	40
CTF035	35	300	300	1000	40	40
CTF070	70	250	400	1250	50	50
CTF110	110	250	400	1550	60	70
CTF240	240	350	600	1600	70	70



TECHNICAL CHARACTERISTICS

TYPE	30	35	70	110	240
Power	400V 50 Hz				
Kw max pump	2,2	2,2	4	7,5	7,5
Noise dB/A	64	72	74	78	78
Load max. litres/h	450	600	1000	1400	2000
Maximum length m	15	35	35	50	50
Filter	Membrane of PTFE				
Filter clearing	Timed compressed air				
Load cycle	Programmable pause/work time				
Level indicator	Optional				
Input of work	From external contact				
Type of discharge	Butterfly valve				
Body material	AISI 304 (AISI 316L upon request)				
Gasket material	NBR (food-NBR upon request)				



DRYERS

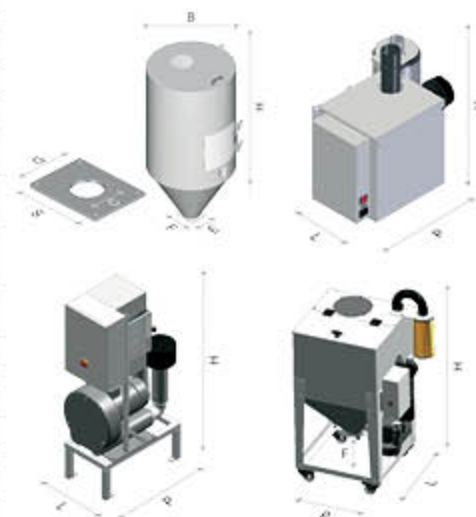
YES-System, implemented in the new Definitive Innovation dryers of the AD-ES-ST "YES-System" SERIES range, can intervene effectively on the parameters and process variables and have a flexible drying system able to adapt to the real operating conditions in the department. The use of the high pressure blower together with an end monitoring of process variables, performs an optimal temperature exchange, with superior performance and guarantee of treatment compared to a classic dryer with process fan which has the same characteristics as the plaque. The operating characteristics so designed and the careful and continuous monitoring of all the physical parameters, ensure the absence of deterioration of the plastic material processed.

DIMENSIONS

MODEL	AIR FLOW DRYING MEDIA	PROCESS TEMPERATURE	TOTAL POWER INSTALLED	AVERAGE POWER CONSUMED	SUPPLY VOLTAGE	DIMENSIONS	WEIGHT	F
TYPE	mc/h	°C	Kw	80°C (kwh)	V/Hz	LxPxH (mm)	Kg	mm
DIAD30	40	140	1,7	0,82	230/50*	340x518x450	16	/
DIAD80	80	140	3	1,64	230/50*	380x540x470	23	/
DIES65	130	140	6,2	2,74	400/50*	380x554x917	55	/
DIES95	180	140	8,2	3,84	400/50*	414x605x603	65	/
DIES125	300	140	11,3	6,7	400/50*	440x840x604	76	/
DIES250	600	140	19	13,8	400/50*	447x906x911	100	/
DIES350	750	140	31,5	17,8	400/50*	570x920x1836	300	/
DIES500	1100	140	38	26,7	400/50*	570x920x1836	330	/
DIES700	1500	140	47,5	35,8	400/50*	570x920x1936	350	/
DIES1000	2200	140	83	52	400/50*	821x1690x2540	405	/
DIST100/30	80	140	3	1,61	230/50*	638x832x952	82	246
DIST100/35	80	140	3	1,61	400/50*	638x832x952	82	246
DIST200/30	80	140	3	1,61	230/50*	638x832x1212	99	246
DIST200/35	80	140	3	1,61	400/50*	638x832x1212	99	246
DIST400/65	130	140	6,2	2,73	400/50*	843x1037x1192	130	193

(*) = other dimensions on request

MODEL	CAPACITY	Ø B	H	Ø C	E	F	G	H	DOOR	Kg
DIH15	15	372	454	54	140	180	110	150	NO	15
DIH30	30	372	654	54	140	180	110	150	NO	18
DIH60	60	452	872	54	140	180	110	150	NO	30
DIH80	80	452	1030	54	140	180	110	150	NO	33
DIH100	100	578	870	84	180	240	150	210	NO SI	43
DIH150	150	578	1170	84	180	240	150	210	NO SI	50
DIH200	200	648	1223	84	180	240	150	210	NO SI	72
DIH250	250	648	1423	84	180	240	150	210	NO SI	80
DIH300	300	648	1613	84	180	240	150	210	SI	90
DIH400	400	770	1681	84	180	240	150	210	SI	105
DIH500	500	895	1790	84	180	240	150	210	SI	132
DIH600	600	895	1890	84	180	240	150	210	SI	140
DIH800	800	895	2240	84	180	240	150	210	SI	185
DIH1000	1000	1115	2050	116	230	360	190	320	SI	250
DIH1200	1200	1115	2275	116	230	360	190	320	SI	270
DIH1500	1500	1410	2030	180	280	280	250	250	SI	280
DIH2000	2000	1410	2450	180	280	280	250	250	SI	340





DDI DEHUMIDIFIER

YES-System, implemented in the new Definitive Innovation dehumidifiers of the DDT "YES-System" SERIES range, can intervene effectively and automatically on the parameters and on the process variables, and is able to flexibly adapt to real conditions of use in the department. The modular valve, properly designed, together together with an end monitoring of the process variables, makes an optimum moisture / sieves / temperature / flow exchange, with a performance much higher than a classic tower dehumidifier and exchange drawers as it has the same basic characteristics. The progressive operating cycle and the careful and continuous monitoring of all the physical parameters, ensure the marked reduction in the deterioration of the sieves and a significant lifespan of the same of up to 10 years.

"YES-System" TECHNOLOGY (or a further new contribution of Definitive Innovation to energy saving and production efficiency) Having a too high dehumidification time, with excessive temperatures and consequently long exposure of the material to large amounts of hot air, can cause thermal degradation and oxidation of thermoplastic materials, as well as a considerable energy expenditure. This is not the case with Definitive Innovation thanks to the automatic balancing of the air flow and the dehumidification temperature through the "YES-System" technology which continuously monitors the parameters and the process variables. The innovative system is able to automatically recognize the stops and/or variations in production and consequently adapt capacity and working temperature to protection level. The actions of the "YES-System" therefore, besides from preventing damage to the plastic material also provides significant savings in energy which is added to that obtained via the DDT TECHNOLOGY. A further prerogative of the "YES-System" is a visual signaling of "material ready for use" and/or "excessive material withdrawal" that alerts the user to the adequacy or otherwise of the dehumidification treatment that has occurred on the specific technopolymer.

DIMENSIONS

MODEL		AVERAGE DRYING AIR FLOW	PROCESS TEMPERATURE	TOTAL POWER INSTALLED	AVERAGE POWER	CONSUMED SUPPLY VOLTAGE	DIMENSIONS	WEIGHT
TYPE		mc/h	°C	Kw	80°C (kwh)	V/Hz	LxPxH (mm)	Kg
DDI140	MT	70	150	3,4	1,7	400/50*	550x826x1440	180
	HT		190	4,5				
DDI200	MT	120	150	5,4	2,8	400/50*	550x826x1540	195
	HT		190	8,8				
DDI300	MT	170	150	9,5	4,5	400/50*	550x826x1640	210
	HT		190	11,1				
DDI500	MT	280	150	14,4	7,0	400/50*	550x1061x2005	310
	HT		190	16,4				
DDI800	MT	400	150	22,3	11,6	400/50*	550x1061x2210	360
	HT		190	25,3				

(*) = other dimensions on request

MODEL	CAPACITY	Ø B	H	Ø C	E	F	G	S	DOOR	Kg
DIH60	60	452	872	54	140	180	110	150	NO	30
DIH80	80	452	1030	54	140	180	110	150	NO	33
DIH100	100	578	870	84	180	240	150	210	NO	43
									SI	
DIH150	150	578	1170	84	180	240	150	210	NO	50
									SI	
DIH200	200	648	1223	84	180	240	150	210	NO	72
									SI	
DIH250	250	648	1423	84	180	240	150	210	NO	80
									SI	
DIH300	300	648	1613	84	180	240	150	210	SI	90
DIH400	400	770	1681	84	180	240	150	210	SI	105
DIH500	500	895	1790	84	180	240	150	210	SI	132
DIH600	600	895	1890	4	180	240	150	210	SI	140
DIH800	800	895	2240	84	180	240	150	210	SI	185
DIH1000	1000	1115	2050	116	230	360	190	320	SI	250
DIH1200	1200	1115	2275	116	230	360	190	320	SI	270
DIH1500	1500	1410	2030	180	280	280	250	250	SI	280
DIH2000	2000	1410	2450	180	280	280	250	250	SI	340

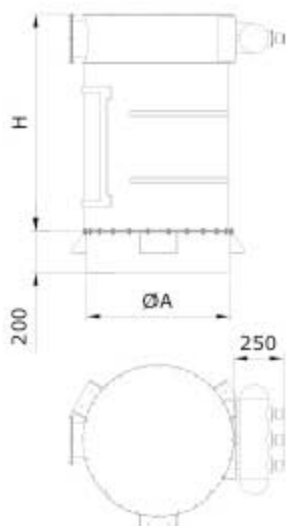




CIRCULAR SLEEVE FILTERS AIR-RB SERIES

The Definitive Innovation circular sleeve filters meet the most demanding requirements in terms of dedusting in the various industrial applications (such as the pneumatic transport under pressure, depression or empty, the uptake of suspended particles) in which the air / powder separation is crucial to proper functioning.

Their clean geometry, along with quality construction materials as well as the wide range of filter media and accessories provided, guarantees high performances.



DIMENSIONS

MODEL	M ²	A	H
AIR-RB-01	1	400	1050
AIR-RB-02	2	600	800
AIR-RB-03	3	600	1050
AIR-RB-04	4	600	1300
AIR-RB-05	5	800	1150
AIR-RB-08	8	800	1650
AIR-RB-10	10	1000	1150
AIR-RB-16	16	1000	1650
AIR-RB-20	20	1000	1900

TECHNICAL CHARACTERISTICS

	STANDARD	ON REQUEST
Contact parts	AISI 304	AISI 316L
External finishing	Satinizing 180 mesh	
Internal finishing	2B	
Gaskets	NBR	NBR supply
Medium filter	Felt PE 500 gr/m ²	PTFE

ACCESSORIES

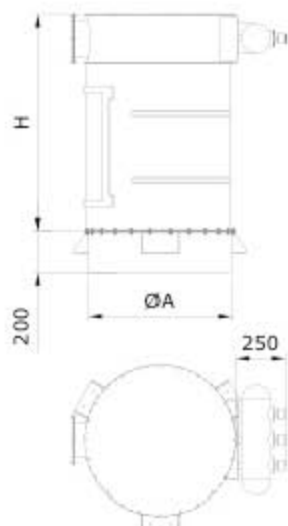
	STANDARD SUPPLY	
Connection ring to silo	Fe	Inox
Powder recovery hopper	Fe	Inox
Extractor with control valve	Si	
Door for lateral extraction	Si	
Differential pressure gauge	U tube	Electronic
Pneumatic timer	Non Atrex	Atrex IID z.22



CIRCULAR SLEEVE FILTERS AIR-RC SERIES

The Definitive Innovation circular sleeve filters meet the most demanding requirements in terms of dedusting in the various industrial applications (such as the pneumatic transport under pressure, depression or empty, the uptake of suspended particles) in which the air / powder separation is crucial to proper functioning.

Their clean geometry, along with quality construction materials as well as the wide range of filter media and accessories provided, guarantees high performances.



DIMENSIONS

MODEL	M ²	A	H
AIR-RC-03	3	400	900
AIR-RC-04	4	400	1150
AIR-RC-06	6	400	1400
AIR-RC-12	11	600	1150
AIR-RC-15	15	600	1400
AIR-RC-20	20	500	1150
AIR-RC-25	25	800	1400
AIR-RC-40	40	1000	1150
AIR-RC-50	50	1000	1400

TECHNICAL CHARACTERISTICS

	STANDARD	ON REQUEST
Contact parts	AISI 304	AISI 316L
External finishing	Satinizing 180 mesh	
Internal finishing	2B	
Gaskets	NBR	NBR supply
Medium filter	TNT 250 gr/m ²	PTFE

ACCESSORIES

	STANDARD SUPPLY	
Connection ring to silo	Fe	Inox
Powder recovery hopper	Fe	Inox
Extractor with control valve	Si	
Door for lateral extraction	Si	
Differential pressure gauge	U tube	Electronic
Pneumatic timer	Non Atrex	Atrex IID z.22



MDN SERIES MIXERS

The MDN Series horizontal ribbon mixers with opposite coils are the simple and essential proposals for obtaining quickly a homogeneous and repeatable batch mixture even with small quantities of product.

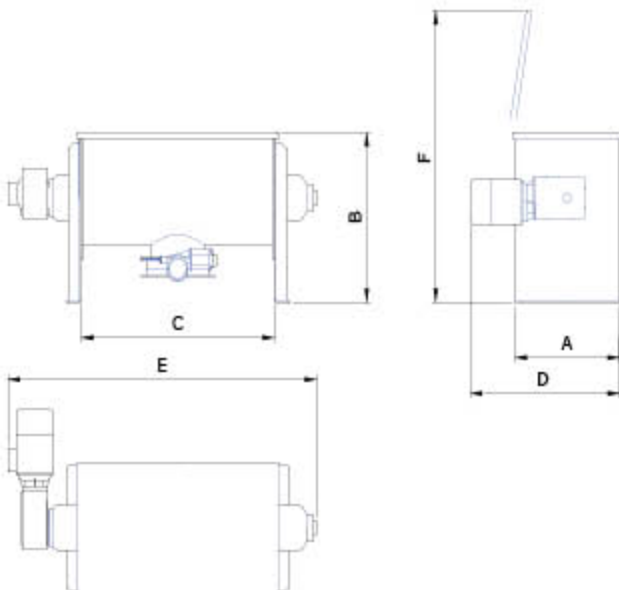
The clean structure of the mixer composed of U-section trough makes it easy to install in addition to the application of a complete series of accessories such as injectors of liquid additives, thermal exchange spaces for cooling or heating the mixed compound. The wide upper area allows the mixer to be loaded with the most varied systems (screws, pneumatic loaders, etc.).

DIMENSIONS

MODEL	A	B	C	D	E	F
MDN150	600	750	1000	800	1500	1350
MDN300	700	850	1250	900	1800	1550
MDN450	800	950	1400	1200	2000	1750
MDN600	800	1250	1800	1300	2400	2050
MDN900	1000	1250	1400	1500	2400	2250

TECHNICAL CHARACTERISTICS

	STANDARD SUPPLY	UPON REQUEST
Contact parts	AISI 304	AISI 316L
Seals	Food, wear resistant	Nitrogen flushing
Load Inlet	Circular with connection flange	As per customer drawing
Vent Inlet	Circular with filter PTFE	
Discharge Inlet	Circular with butterfly valve	Total pneumatic discharge
Optionals	See specific document	





MDL SERIES BLADE MIXERS

The MDL Series horizontal blade mixers satisfy in many uses the demands in discontinuous mixing. The cylindrical structure of the mixer and the use of appropriately shaped mixing knives, give the powders to be amalgamated turbulences which lead to a high degree of homogenization.

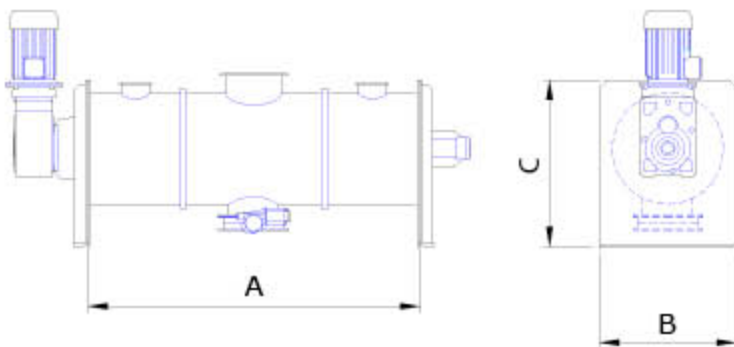
The very short mixing times and the flexibility to receive a complete line of accessories (such as injectors for liquid additives, thermal exchange spaces for cooling and heating the mixed compound) make it a reliable, long-lasting and especially efficient product.

DIMENSIONS

MODEL	A	B	C
MDL150	1250	750	600
MDL300	1750	850	700
MDL450	1500	950	800
MDL600	2000	1250	800
MDL900	2000	1250	1000

TECHNICAL CHARACTERISTICS

	STANDARD SUPPLY	UPON REQUEST
Contact parts	AISI 304	AISI 316L
Seals	Food, wear resistant	Nitrogen flushing
Loading Inlet	Circular with connection flange	As per customer drawing
Vent Inlet	Circular with PTFE filter	
Supplemental Inlets additives	Circular with connection flange	As per customer drawing
Discharge outlet	Circular with butterfly valve	Total pneumatic discharge
Optionals	See specific document	





MDV SERIES SPADE MIXERS

The MDV Series horizontal blade mixers are as high performing as the technology provides for batch mixing.

The cylindrical structure of the mixer composed of a thick pipe and the use of controlled profile spades, avoid the presence of "static zones" inside the machine, while forcing every particle to enter the high turbulence and to amalgamate homogeneously with particles of different morphology.

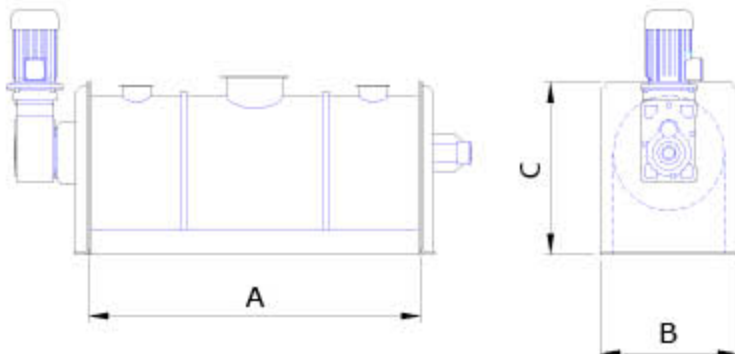
The extremely short mixing times and the flexibility to receive a complete line of accessories (such as injectors for liquid additives, thermal exchange spaces for cooling and heating the mixed compound) make it a product that is reliable, long-lasting and especially efficient in reaching a very high degree of homogenization.

DIMENSIONS

MODEL	A	B	C
MDV150	1250	750	600
MDV300	1750	850	700
MDV450	1500	950	800
MDV600	2000	1250	800
MDV900	2000	1250	1000

TECHNICAL CHARACTERISTICS

	STANDARD SUPPLY	UPON REQUEST
Contact parts	AISI 304	AISI 316L
Seals	Food, wear resistant	Nitrogen flushing
Load inlet	Circular with connection flange	As per customer drawing
Vent inlet	Circular with PTFE filter	
Supplemental additives inlets	Circular with connection flange	As per customer drawing
Discharge outlet	Circular with butterfly valve	Total pneumatic discharge
Optionals	See specific document	



PLANTS

FOOD INDUSTRY



BUILDING/CERAMICS INDUSTRY



CHEMICAL INDUSTRY



PLASTIC INDUSTRY





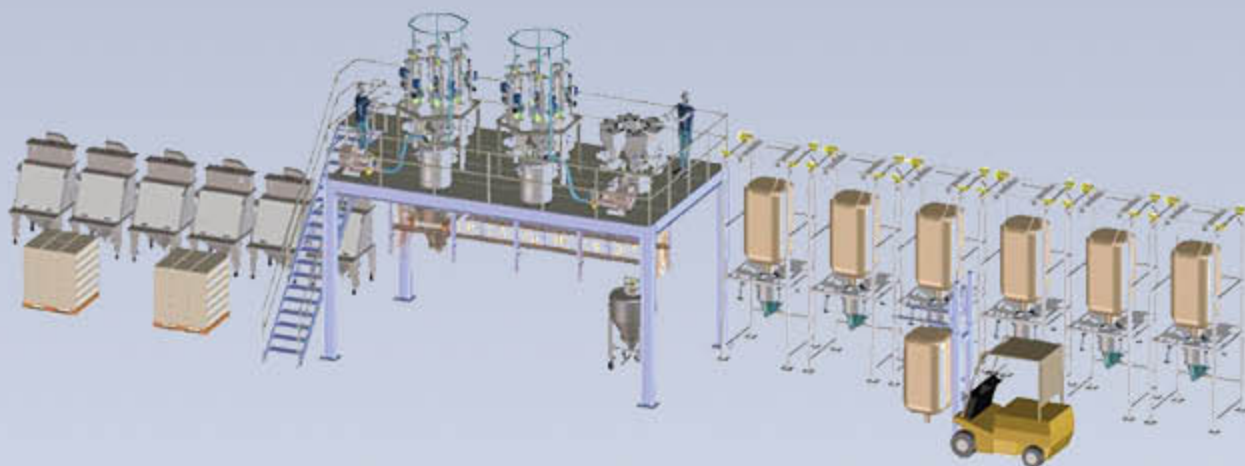
ICE CREAM PREPARATION PLANT

FOOD INDUSTRY

In a pasta factory, the main ingredient is flour, mixed with water it feeds the kneader, and can include various powder ingredients such as egg, spinach, hot pepper and even vitamins.

The flow rates operated per individual line can exceed 2,500 kg/h. The main areas of the typical plant are composed of an area for storage of the flour, the daily bins for the additives, the systems of extraction of the material from the silos and the supply of the feeding systems dedicated to the different materials. After the kneader, there is the drying unit and lastly the packaging and palletization.

The precision required for the flour is normally between 2.0 and 1.0% so that often volumetric feeders are used for the flour and volumetric ones for the additives which are more expensive and require accuracy to 0.5%. Extremely important for the food sector is the construction material and the degree of finish of the machines which must be manufactured in AISI 304 or 316L stainless steel and with a mirror finish; in addition the feeder systems for this sector are always equipped with rapid dismantling devices for fast and safe sanitation.



MIXTURES PREPARATION PLANT

ZOOTECHNICAL INDUSTRY

The feeding of Methionine (an amino acid essential for all animals) in feed sector is strategically important.

Amino acids are structural components of all the vegetable or animal proteins. Animals cannot synthesize on their own these amino acids, defined as essential. For this reason, various micro components, which must be carefully measured, have to be included in their diet.

The multiple feeding stations of DEFINITIVE INNOVATION respond perfectly to the needs of all the companies that handle animal nutrition. The traceability of the product is ensured by the management and control system of the recipes which ensure their formulations in accordance with applicable law.



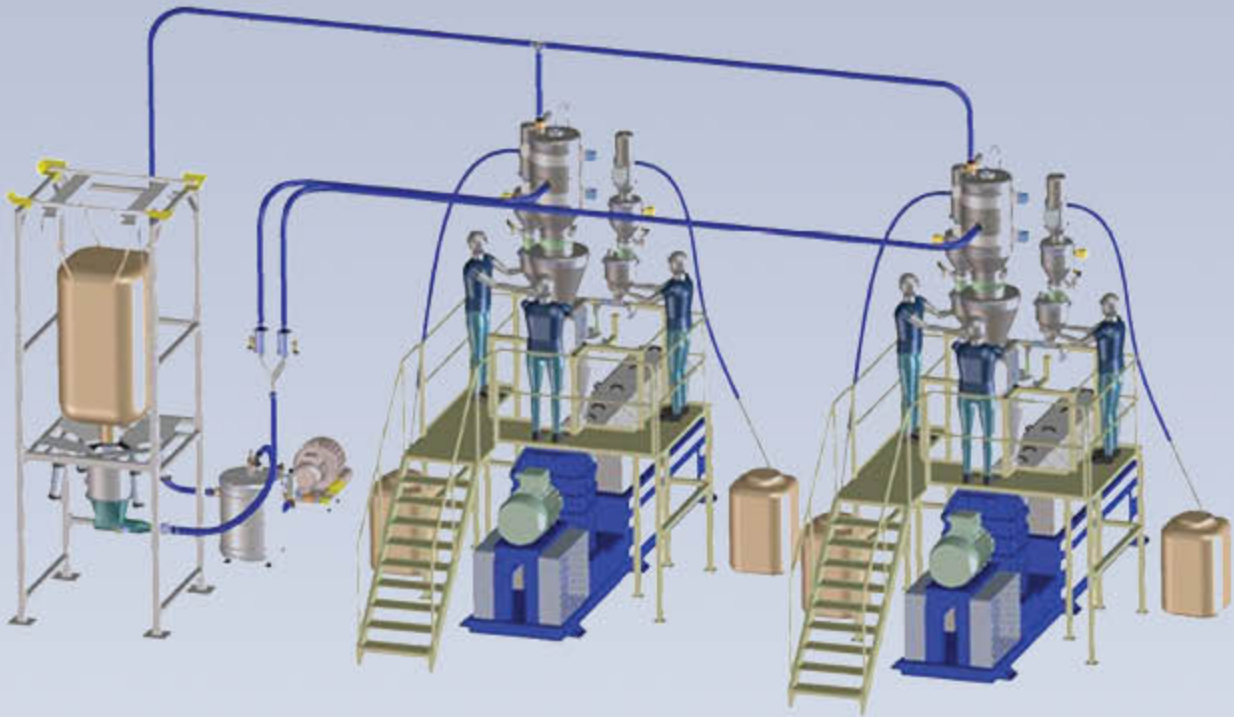
PRODUCTS PREPARATION PLANTS

COSMETIC INDUSTRY

Feeding in the cosmetic field finds a typical application in the preparation process of trichological tints. The feeding system is recommended for all types of powder, flakes or granules with apparent weight between 0.4 and 1.2 kg/l. The system ensures speed and repeatability of the feeding and an optimal management of the production lots and the raw materials warehouse for maximum safety of quality and productivity. Minimum contact of the operators with the powders and elimination of the dispersions of material into the work environment for maximum safety of health and hygiene.

The process is completely automatic and the Software is created in such a way that it allows the machine to manage all the recipes necessary with formulations of between 1 and 20 components autonomously, even without staff present for maximum operating comfort. In short, the advantages that the system offers are: Total elimination of human error. Repeatability of the feeding. Elimination of contact by the operator with the products to be dispensed. The loading of the products is done with a vacuum pump. The loading operations are confirmed only after the Software identifies the product being loaded through the bar code selected. Through the connection of our control system with your management system, it is possible to perform a cross-check of the production lots with what is stored in the warehouse.

All the operations can be done through an operating PC, on which the recipes can be selected, the weights of each individual component can be verified during the feeding operations, and it's possible to verify all the feeding cycles made that are saved automatically on the feeding operations, as well as all the feeding cycles performed which are saved automatically on the PC installed.



COMPOUNDS PLANT

PLASTIC INDUSTRY

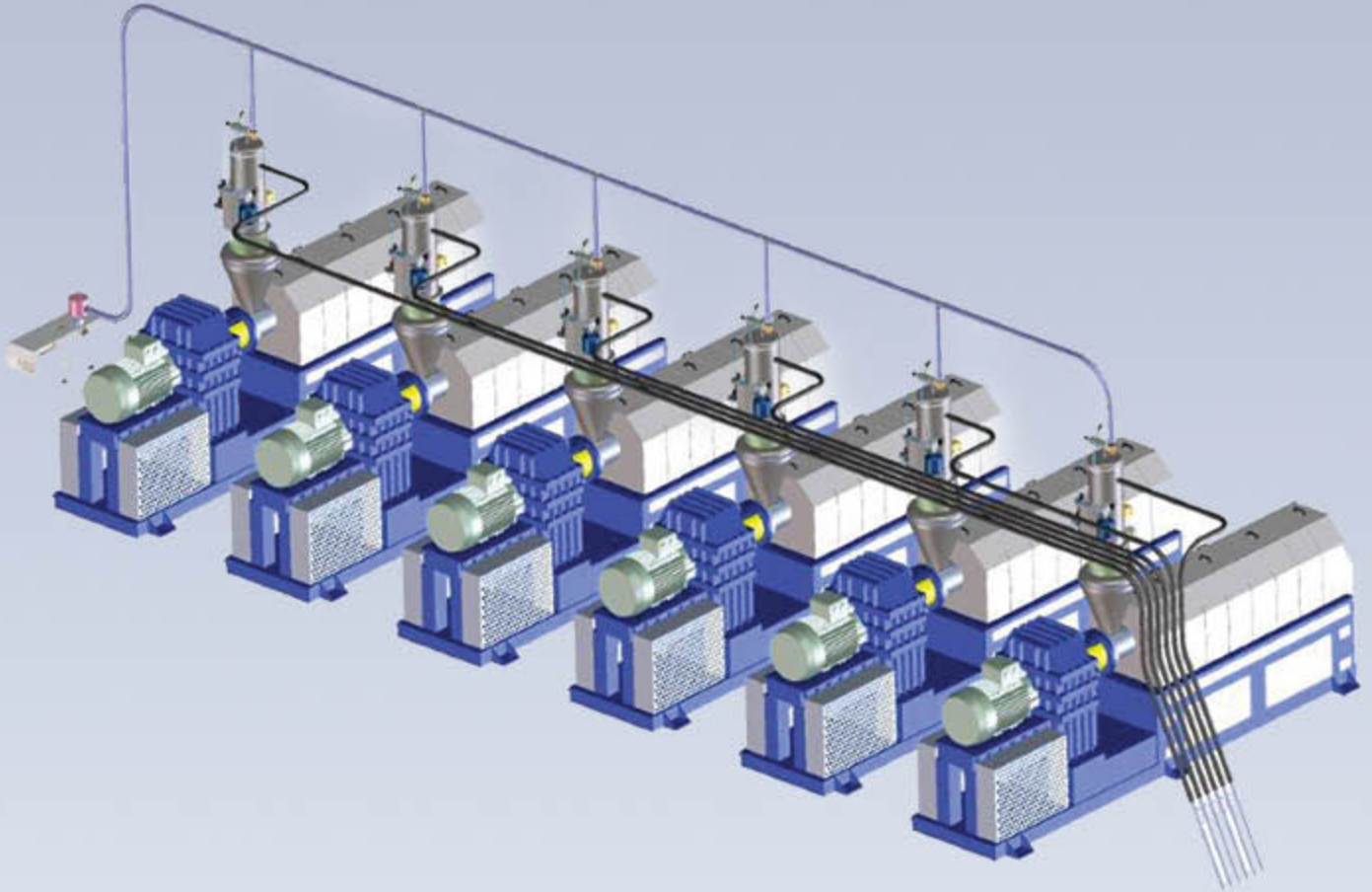
DEFINITIVE INNOVATION has fine-tuned machines and components that are widely used in plastic extrusion plants. Many types of different plastics can be realized by using PE and PP powders as base and adding various additives depending on the main property which will characterize the final result that it is desired.

For example, resistance to atmospheric agents to create outdoor furniture or elasticity to create food films.

The main sections of the typical plant include a storage area for the base powder and the additives, the extraction systems of the material from the silos and the supply of the dedicated feeder systems for the different materials. The supply of the extruder can be direct or through an interposed mixer. Exiting the extruder, there are still various devices such as the granulator, the cutter and the dryer.

The process includes the feeding of the main powder and the combination in percentage of the various additives included in the formula. The accuracy normally required for this type of application is between 1.0 and 0.5%.

The hourly production of the plants of this type varies a lot based on the product being produced, from 1.0 t/h to over 40 t/h and the ATEX certification of the system is being required more and more often.



CONVEYING SYSTEM

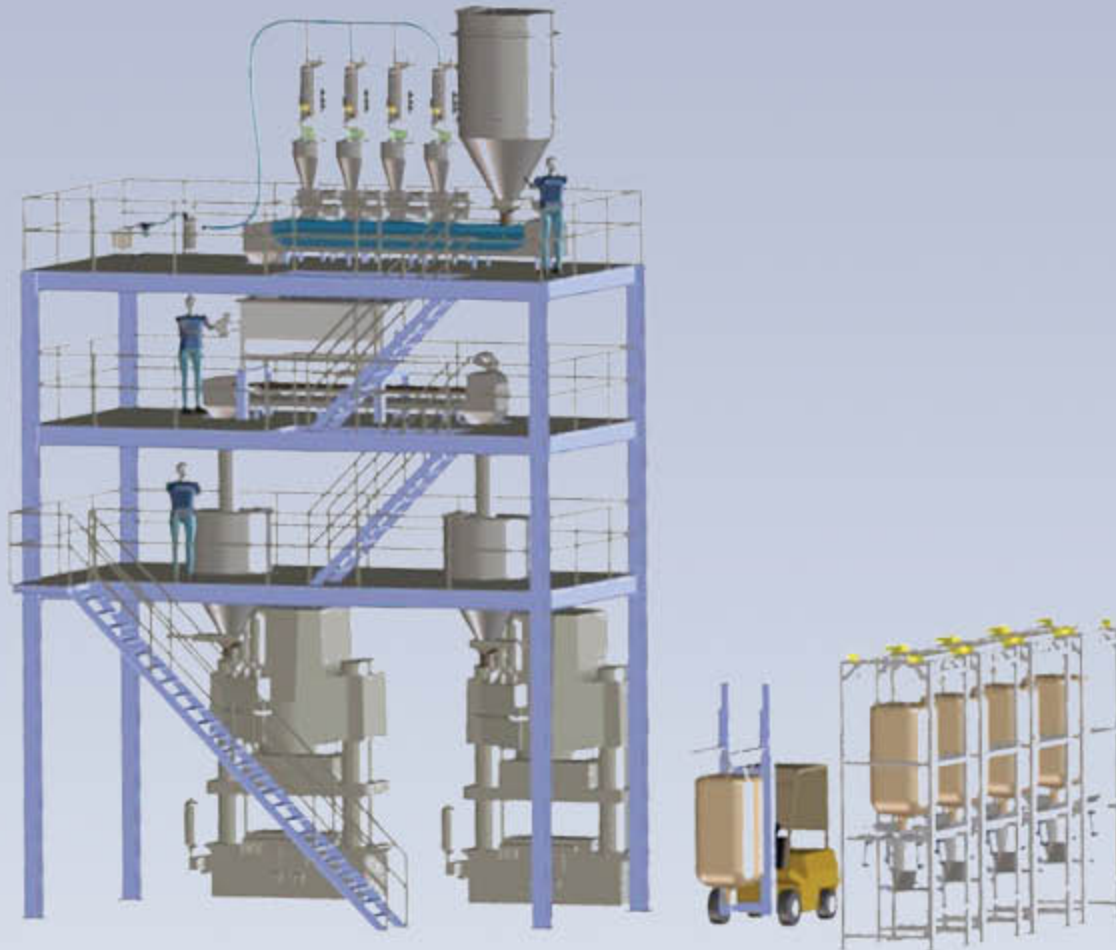
CHEMICAL INDUSTRY

A common example of application in the chemical sector is the batch feeder. The need is the dispensing individually different ingredients, including liquids, into a weighed hopper to make them available to the following process, for example a mixing cycle. The most diverse devices can be used to store, extract, transport, weigh and mix the products of our recipe.

The distinctive feature of a batch plant is always the high accuracy required, the system of static weighing is suitable for reaching weights as accurate as smaller than 0.1%. The capacity of each batch is commensurate with that of the machine downstream in the process.

For example, if we have a mixer, the batch may be within the range of 100 - 1000kg approximately.

When the number of ingredients to be managed is high, we use a PLC system. This solution allows for total control of the plant, from the levels of all the ingredients, to the management of the recipes with direct control of all the dosing units (valves, screws, rotating valves, etc.), the registration of all the plant alarms and the production data by shift/lot/order for purposes of tracking the product. Often the application in the chemical field leads to the need for the plant to be certified as in ATEX release.



COLOURING PLANTS

BUILDING/CERAMICS INDUSTRY

A typical case in this sector is the glass recycling plant. It consists in the separation and recovery of glass coming from "multiple inorganic material" collection or from waste of particular production processes. From a material collection hopper, usually placed outside the shed, with a vibrating channel feeder, a conveyor belt with a dynamic scale, which allows us to determine the flow, is fed on which is installed transversally in the upper section an initial magnetic separator which allows us to eliminate any extraneous ferrous parts. Next the material passes to a second induction separator which separates the product from the non-ferrous metals, and then we feed a sieve composed of 2 nets so that we can carry out 3 selections.

The material exiting the first selection > 300 mm is taken with a conveyor belt down to a sound-proof cabin for manual selection, where operators eliminate the waste components, sliding them down specific chutes. Transported onto another belt, we move on to a hammer. The crushed glass flow rates into an underlying hopper used for storage and for conveying the product to the second sieve located on the system, selecting the material in 2 grain sizes, one of less than 15 mm towards a first pre-established compartment, while the size over 15 mm returns in a circle to the transport line previously listed to the second exit of the main sieve to be directed through inclined transport to the feeder of the sorting machine, which separates the product also by colour into two separate compartments.

The systems for this application can have flow rates that are also greater than 10 t/h and for an excellent yield the constancy in the feeding of the sorting machine is extremely important. A typical application of the screw feeding systems is the dispensing of flocculant for water purification. The flocculant is used to hold back the solid parts in suspension in the liquid often present as residue of production processes. The typical feeder does not require high accuracy and falls in a range of $\pm 2\%$. In this case, a good compromise between costs/effect is provided by the volumetric feeders, therefore without the weighing system which characterizes the loss-in-weight systems. Typical flow rates are around 10 kg/h.

SECTORS

FOOD



- MILLING
- PASTA
- DESSERTS
- BABY FOOD
- SUPPLEMENTS
- SNACKS
- BAKERY
- AROMAS AND SPICES
- CHEESE AND DAIRY PRODUCTS
- CEREALS
- LEGUMES
- COFFEE
- DRINKS AND LIQUIDS
- FRUIT AND VEGETABLES
- OENOLOGY

CHEMICAL



- COSMETICS
- FERTILIZERS
- BIODIESEL
- GLASSWORKS
- FOUNDRY
- COVERINGS
- DETERGENTS AND SOAPS
- RESINS, GLUES, PAINTS
- MINERALS AND BASE PRODUCTS
- CELLULOSE PRODUCTION
- PLASTIC COMPOUND
- PETROCHEMICAL

PLASTICS



- COMPOUND PRODUCTION
- PRODUCTION POLYMERS
- PRODUCTION MASTERBATCH
- EXTRUSION
- PRODUCTION DRAWN PIPES
- PRODUCTION BLOWN FILM
- THERMOFORMING
- PRODUCTION PLASTIC LAMINATES
- PRODUCTION FOOD PACKAGING

PHARMACEUTICALS



- DOSAGE ACTIVE INGREDIENTS
- DOSAGE EXCIPIENTS

BUILDING



- CERAMICS PLANTS
- CERAMIC COLOURING
- READY-MIX PLANTS
- ASPHALT
- BRICKS
- MARBLE
- CEMENTS AND CONCRETE MIXING

ZOOTECHNICS



- SUPPLEMENTS AND VITAMINS
- FEED
- PET FOOD

ECOLOGY AND PURIFICATION



- RECOVERY AND PURIFICATION SLUDGE
- AIR PURIFICATION PLANTS
- RECOVERY, RECYCLING AND GRINDING OF PLASTICS
- MISCELLANEOUS RECYCLING
- PRODUCTION PELLETS
- HEATING PELLETS
- BIODIESEL
- BIOGAS/BIO MASS

COSMETICS



- PLANTS FOR TRICHOLOGICAL TINTS
- DOSAGE PREPARATION

